

WAAS CH <b>60934</b> <b>W36A</b>	APP CRS <b>004°</b>	Rwy Idg TDZE Apt Elev	<b>3800</b> <b>832</b> <b>835</b>
--	------------------------	-----------------------------	---

# RNAV (GPS) RWY 36

DUPONT/LAPEER (D95)

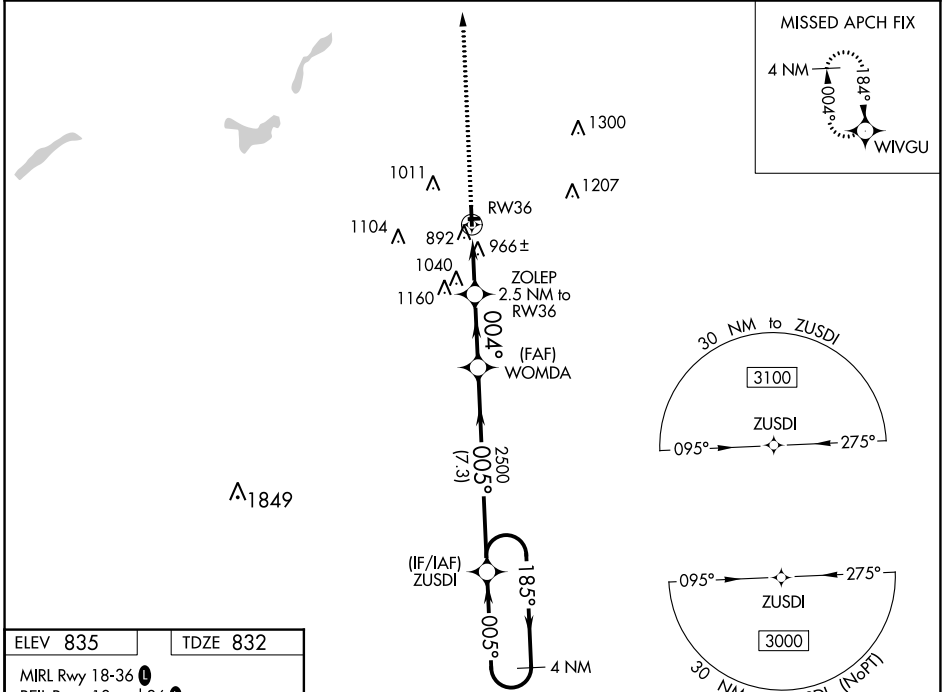
**▽** DME/DME RNP-0.3 NA. Helicopter visibility reduction below ¾ SM NA. When local altimeter setting not received, use Flint altimeter setting and increase all MDA 60 feet and increase LNAV Cat C visibility ½ mile and LP Cat C and Circling Cat C visibility ¼ mile. Circling NA to Rwy 9 and 27.

**MISSED APPROACH:**  
Climb to 3000 direct WIVGU and hold.

AWOS-3P  
**134.050**

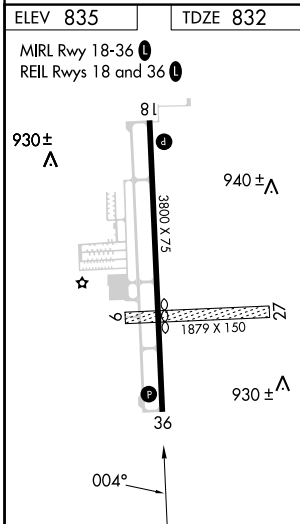
GREAT LAKES APP CON ★  
**118.8 257.9**

UNICOM  
**123.0 (CTAF) 0**



EC-1, 08 AUG 2024 to 05 SEP 2024

EC-1, 08 AUG 2024 to 05 SEP 2024



3000	WIVGU	Descent angle NA.		ZUSDI	4 NM Holding Pattern
		ZOLEP 2.5 NM to RW36	WOMDA	ZUSDI	
		RW36			
		1660	2500	3000	
		2.5 NM	2.6 NM	7.3 NM	
CATEGORY	A	B	C	D	
LP MDA	1220-1	388 (400-1)	1220-1½ 388 (400-1½)	NA	
LNAV MDA	1260-1	428 (500-1)	1260-1¼ 428 (500-1¼)	NA	
<b>C</b> CIRCLING	1300-1 465 (500-1)	1380-1 545 (600-1)	1460-1¾ 625 (700-1¾)	NA	