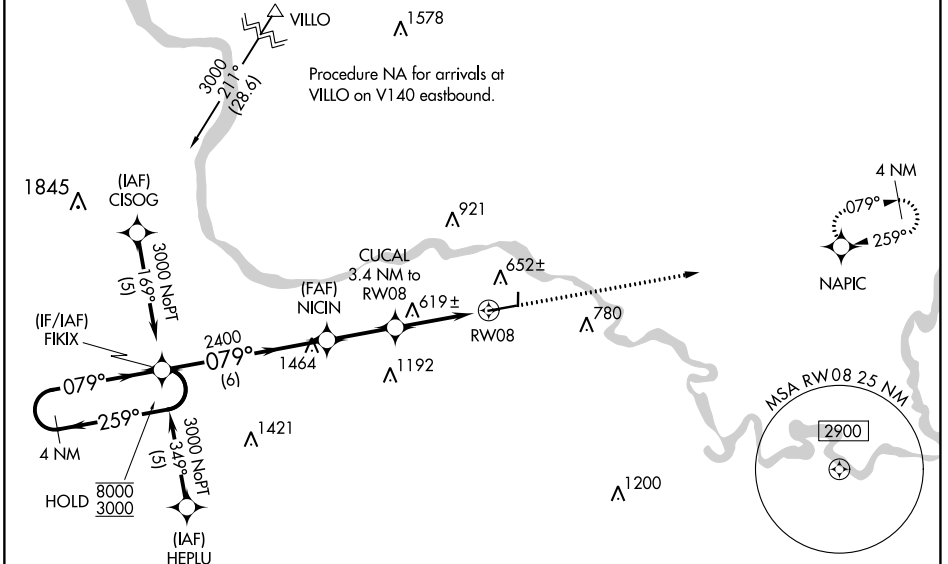


WAAS CH 97717 W08A	APP CRS 079°	Rwy Idg TDZE Apt Elev	6002 463 465
--	------------------------	-----------------------------	---

RNAV (GPS) RWY 8

BATESVILLE RGNL (BVX)

RNP APCH - GPS.		<p>▽ △</p> <p>Circling NA north of Rwy 8-26. For uncompensated Baro-VNAV systems, LNAV/VNAV NA below -15°C or above 54°C.</p>	<p>MISSED APPROACH: Climb to 3000 direct NAPIC and hold.</p>
AWOS-3PT 126.375	MEMPHIS CENTER 126.85 281.55		



SC-1, 31 OCT 2024 to 28 NOV 2024

SC-1, 31 OCT 2024 to 28 NOV 2024

ELEV 465	TDZE 463			
<p>4 NM Holding Pattern</p> <p>VGSI and RNAV glidepath not coincident (VGSI Angle 3.00/TCH 44).</p> <p>8000 ← 259°</p> <p>3000 ← 079°</p> <p>GP 3.00° TCH 40</p> <p>FIKIX ← 079°</p> <p>NICIN 2400</p> <p>CUCAL 3.4 NM to RW08</p> <p>1.4 NM to RW08</p> <p>RW08</p> <p>6 NM 2.5 NM 2 NM 1.4</p> <p>3000 ↑</p> <p>NAPIC</p> <p>81</p> <p>2804 X 60</p> <p>26</p> <p>36</p> <p>6002 X 150</p> <p>079°</p>				
CATEGORY	A	B	C	D
LPV DA	713-1 250 (300-1)			
LNAV/VNAV DA	802-1¼ 339 (400-1¼)			
LNAV MDA	940-1	477 (500-1)	940-1½ 477 (500-1½)	940-1½ 477 (500-1½)
CIRCLING	980-1 515 (600-1)	1000-1 535 (600-1)	1220-2¼ 755 (800-2¼)	1400-3 935 (1000-3)
REIL Rwys 8 and 26 0				
MIRL Rwy 8-26 0				