

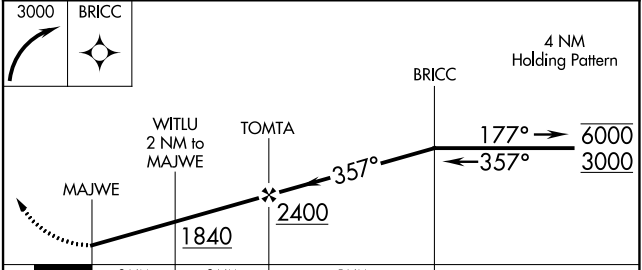
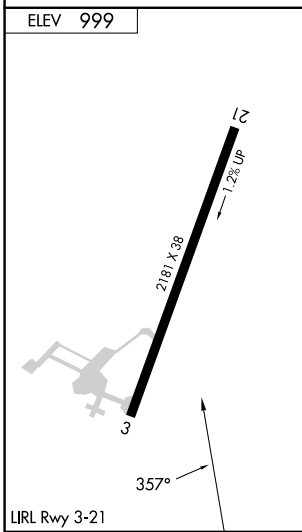
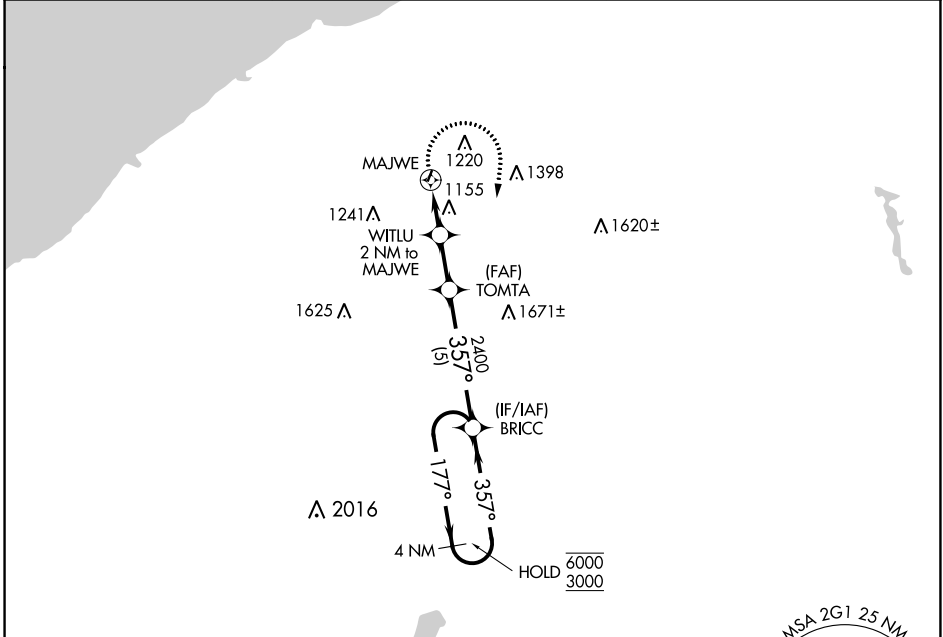
APP CRS	Rwy Idg	N/A
357°	TDZE	N/A
	Apt Elev	999

RNAV (GPS)-A

CONCORD AIRPARK (2G1)

RNP APCH - GPS.	MISSED APPROACH: Climbing right turn to 3000 direct BRICC and hold.
NA Procedure NA at night. Use CLE altimeter setting.	

CLE ASOS 127.85	CLEVELAND APP CON 125.35 346.325	UNICOM 122.8 (CTAF)
---------------------------	--	-------------------------------



CATEGORY	A	B	C	D
CIRCLING	1700-1 701 (800-1)	1760-1 761 (800-1)	1820-2½ 821 (900-2½)	NA

EC-2, 26 DEC 2024 to 23 JAN 2025

EC-2, 26 DEC 2024 to 23 JAN 2025