

WAAS CH 97321 W01A	APP CRS 010°	Rwy Idg 5102 TDZE 626 Apt Elev 638
--	------------------------	---

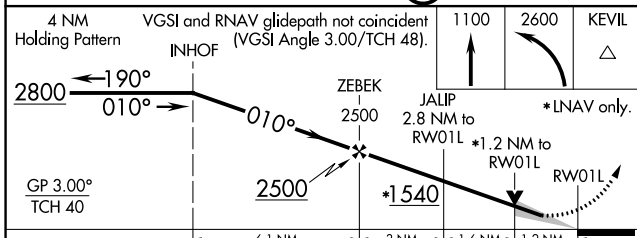
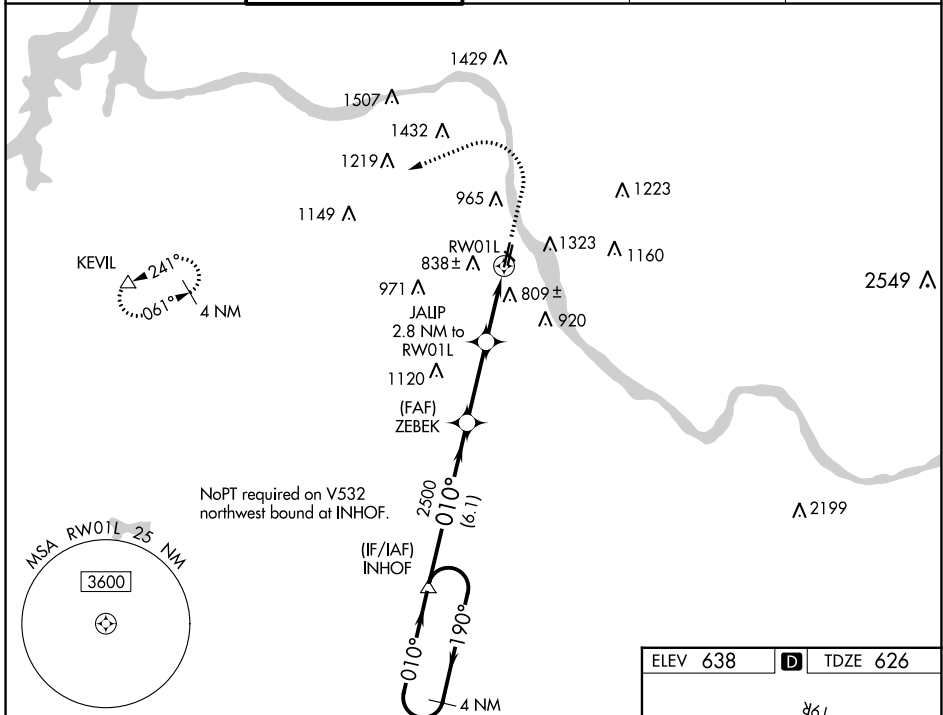
RNAV (GPS) RWY 1L

TULSA RIVERSIDE (RVS)

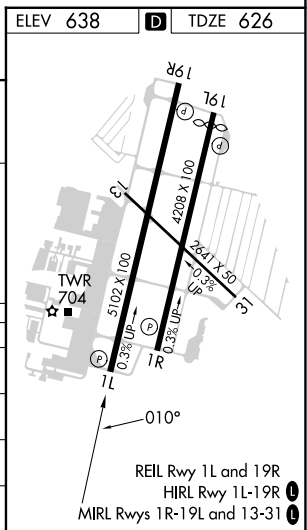
⚠ For uncompensated Baro-VNAV systems, LNAV/VNAV NA below -12°C (11°F) or above 54°C (130°F). Circling NA northeast of Rwy 31 and 19L. DME/DME RNP-0.3 NA.

⚠ MISSED APPROACH: Climb to 1100 then climbing left turn to 2600 direct KEVIL and hold.

ATIS 126.5	TULSA APP CON 134.7	RIVERSIDE TOWER * 120.3 (CTAF) 0	GND CON 121.7	CLNC DEL 124.5	UNICOM 122.95
----------------------	-------------------------------	---	-------------------------	--------------------------	-------------------------



CATEGORY	A	B	C	D
LPV DA	826- ³ / ₄ 200 (200- ³ / ₄)			
LNAV/VNAV DA	1126- ¹ / ₄ 500 (500- ¹ / ₄)			
LNAV MDA	1060-1	434 (500-1)	1060- ¹ / ₄	434 (500- ¹ / ₄)
C CIRCLING	1260-1 622 (700-1)	1280-1 642 (700-1)	1280- ³ / ₄ 642 (700- ³ / ₄)	1380- ² / ₂ 742 (800- ² / ₂)



SC-1, 03 OCT 2024 to 31 OCT 2024

SC-1, 03 OCT 2024 to 31 OCT 2024