

WAAS CH <b>81932</b> <b>W12A</b>	APP CRS <b>125°</b>	Rwy Idg TDZE Apt Elev	<b>4257</b> <b>1060</b> <b>1060</b>
--	------------------------	-----------------------------	---

# RNAV (GPS) RWY 12

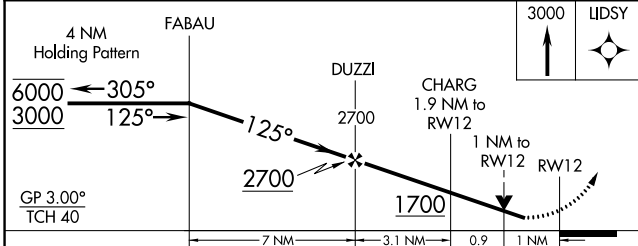
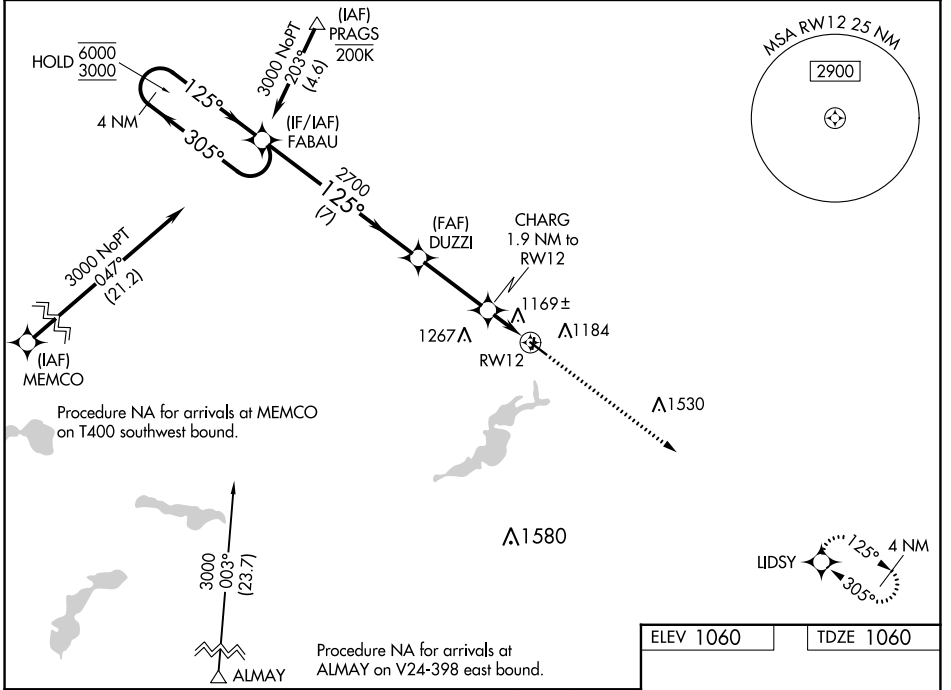
FARIBAULT MUNI-LIZ WALL STROHFUS FLD (F'BL)

RNP APCH - GPS.

**⚠** Circling NA to Rwys 1 and 19. Rwy 12 helicopter visibility reduction below 3/4 SM NA. For uncompensated Baro-VNAV systems, LNAV/VNAV NA below -17°C or above 54°C.

MISSED APPROACH: Climb to 3000 direct LIDSY and hold.

AWOS-3 <b>120.2</b>	MINNEAPOLIS APP CON <b>134.7 284.7</b>	GCO <b>121.725</b>	UNICOM <b>122.8 (CTAF) 0</b>
------------------------	---	-----------------------	---------------------------------



ELEV 1060	TDZE 1060
-----------	-----------

REIL Rwys 12 and 30 0

MIRL Rwy 12-30 0

CATEGORY	A	B	C	D
LPV DA	1310-1	250 (300-1)		NA
LNAV/VNAV DA	1339-1	279 (300-1)		NA
LNAV MDA	1420-1	360 (400-1)		NA
CIRCLING	1520-1	460 (500-1)	1740-2 680 (700-2)	NA

NC-1, 31 OCT 2024 to 28 NOV 2024

NC-1, 31 OCT 2024 to 28 NOV 2024