

LOC/DME I-SME	APP CRS	Rwy Idg	5287
109.3	048°	TDZE	927
Chan 30		Apt Elev	927

ILS or LOC RWY 5

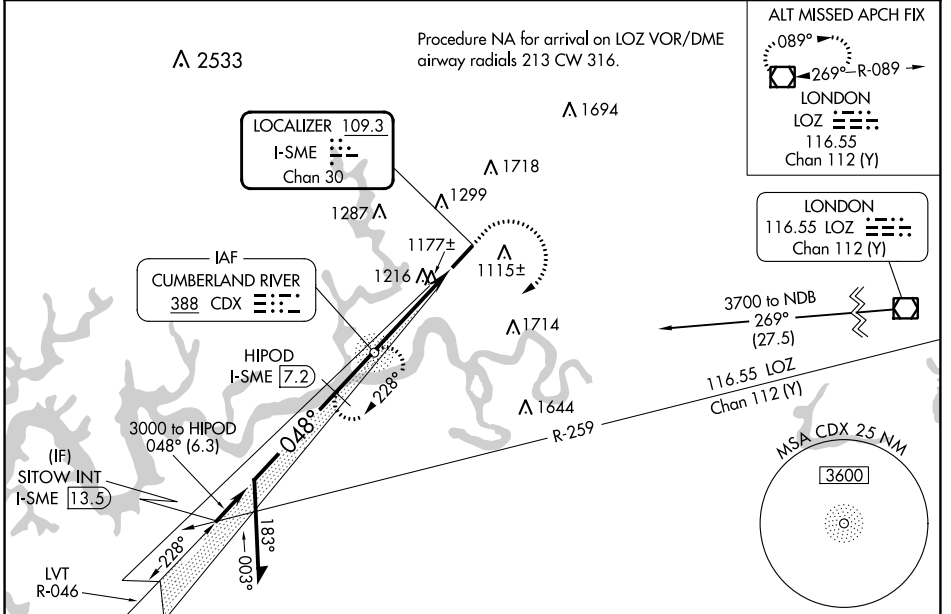
LAKE CUMBERLAND RGNL (SME)

DME required. ADF required.

⚠ Rwy 5 helicopter visibility reduction below 3/4 SM NA. When local altimeter setting not received, use Monticello altimeter setting and increase S-ILS 5 DA to 1526 feet and all visibilities 1/2 SM. Increase all MDAs 60 feet and S-LOC 5 visibility Cat C/D 1/2 SM, and Circling visibility Cat B 1/4 SM. VDP NA when using Monticello altimeter setting.

MISSED APPROACH: Climb to 2000 then climbing right turn to 3000 direct CDX NDB and hold, continue climb-in-hold to 3000.

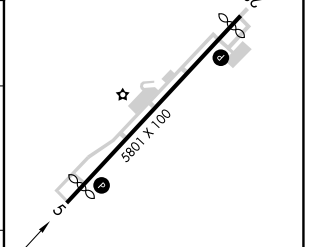
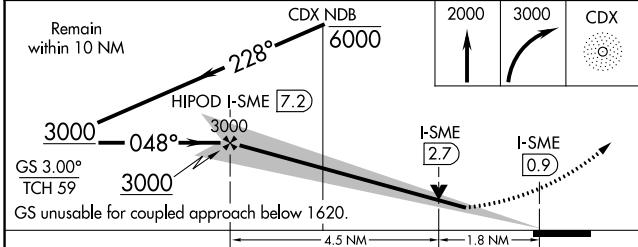
AWOS-3 120.05	INDIANAPOLIS CENTER 124.625 371.925	UNICOM 122.8 (CTAF) 0
-------------------------	-----------------------------------------------	---------------------------------



SE-1, 03 OCT 2024 to 31 OCT 2024

SE-1, 03 OCT 2024 to 31 OCT 2024

ELEV 927	D	TDZE 927
----------	----------	----------



CATEGORY	A	B	C	D
S-ILS 5		1482-1 1/8	555 (600-1%)	
S-LOC 5	1540-1	613 (700-1)	1540-1 3/4	613 (700-1 3/4)
CIRCLING	1620-1 693 (700-1)	1720-1 793 (800-1)	2100-3	1173 (1200-3)