

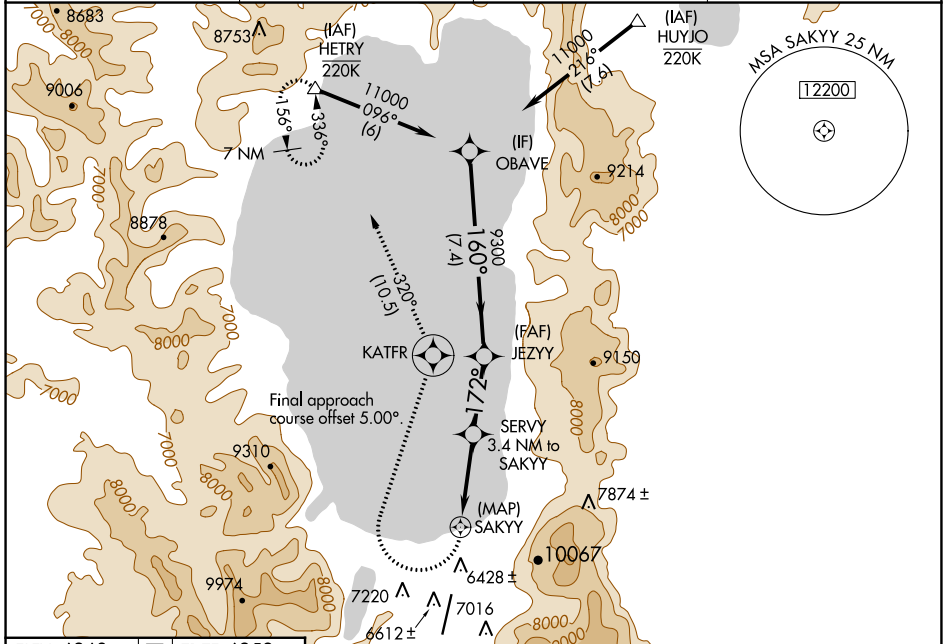
WAAS CH <b>57943</b> <b>W18A</b>	APP CRS <b>172°</b>	Rwy Idg TDZE Apt Elev	<b>7017</b> <b>6259</b> <b>6268</b>
--	------------------------	-----------------------------	---

# RNAV (GPS) RWY 18

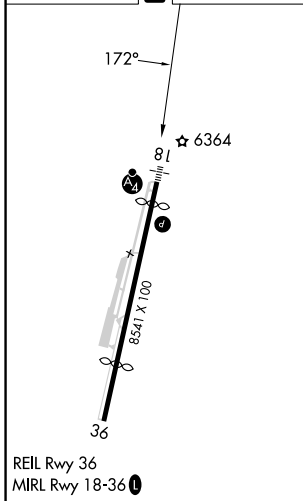
LAKE TAHOE (TVL)

RNP APCH.	MALSF	MISSED APPROACH: (Do not exceed 185K until KATFR). Climbing right turn to 10000 direct KATFR then on track 320° to HETRY and hold, continue climb-in-hold to 12000. * Missed approach requires minimum climb of 425 feet per NM to 10000.
<p>▼ Circling NA at night. Rwy 18 helicopter visibility reduction below 3/4 SM NA. When local altimeter setting not received, -1.3°C procedure NA. Circling NA east of Rwy 18-36.</p>		

ASOS <b>124.725</b>	OAKLAND CENTER <b>127.95 316.1</b>	CLNC DEL <b>134.3</b>	CTAF <b>122.85</b>
------------------------	---------------------------------------	--------------------------	-----------------------



ELEV 6268	<b>D</b>	TDZE 6259
-----------	----------	-----------



10000	KATFR	tr 320°	HETRY	VGSI and descent angles not coincident (VGSI Angle 3.00/TCH 48).			
				SERVY	JEZYY	OBAVE	
				3.4 NM to SAKYY			
				SAKYY	172°	9300	11000
				≤3.20°			
				TCH 60			
				8340			
				2.6 NM	3.4 NM	2.8 NM	7.4 NM
CATEGORY	A	B	C	D			
LP MDA*	6680-3 421 (500-3)						
LP MDA	7120-3	861 (900-3)	7140-3	7320-3			
			881 (900-3)	1061 (1100-3)			
LNAV MDA*	6980-3 721 (800-3)						
LNAV MDA	7280-3	7620-3	8160-3	NA			
	1021 (1100-3)	1361 (1400-3)	1901 (1900-3)				
<b>C</b> CIRCLING	7420-3	7680-3	8160-3	NA			
	1152 (1200-3)	1412 (1500-3)	1892 (1900-3)				

SW-2, 03 OCT 2024 to 31 OCT 2024

SW-2, 03 OCT 2024 to 31 OCT 2024