

(MANGM1.SIT) 23334

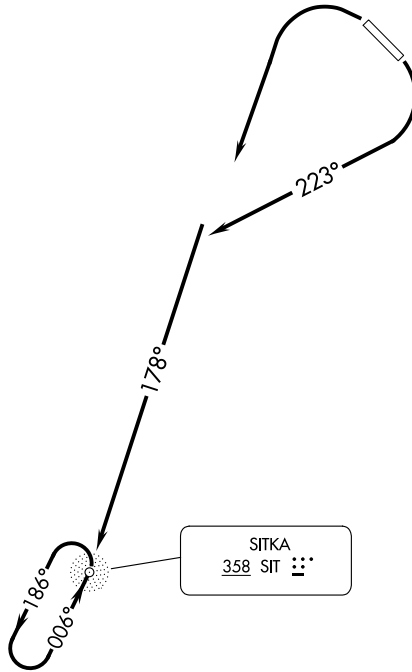
MANGM ONE DEPARTURE

AL-5414 (FAA)

SITKA ROCKY GUTIERREZ (SIT) (PASI)
SITKA, ALASKA

AFIS
135.9
ANCHORAGE CENTER
126.1 335.5
SITKA RADIO
123.6 (CTAF) 122.2

**TOP ALTITUDE:
ASSIGNED BY ATC**



AK, 31 OCT 2024 to 26 DEC 2024

AK, 31 OCT 2024 to 26 DEC 2024

WARNING: High terrain all quadrants, Mount Edgecumbe 3201' MSL, 13 NM southwest of Sitka Airport.

TAKEOFF MINIMUMS

Rwy 11: Standard with the following minimum climb requirements: 180K or less, 410' per NM to 1900; more than 180K, 645' per NM to 3400.
Rwy 29: Standard with minimum climb of 233' per NM to 1000.

NOTE: Chart not to scale.



DEPARTURE ROUTE DESCRIPTION

TAKEOFF RUNWAY 11: Climbing right turn heading 223° to intercept SIT NDB 178° course to SIT NDB thence. . . .

TAKEOFF RUNWAY 29: Climbing left turn direct SIT NDB thence. . . .

. . . .continue climb in SIT NDB holding pattern to cross SIT NDB at or above MEA for direction of flight before proceeding on course, maintain ATC assigned altitude.

MANGM ONE DEPARTURE
(MANGM1.SIT) 01FEB18

SITKA, ALASKA
SITKA ROCKY GUTIERREZ (SIT) (PASI)