

VORTAC SAX 115.7 Chan 104	APP CRS 345°	Rwy Idg TDZE Apt Elev	N/A N/A 422
---	------------------------	-----------------------------	--

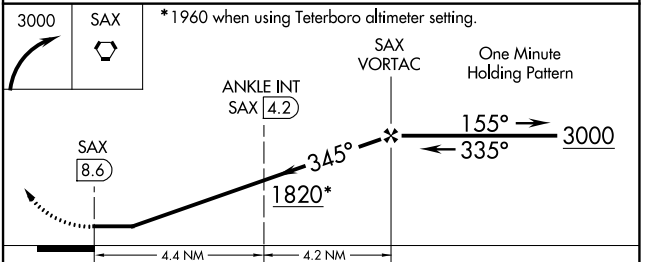
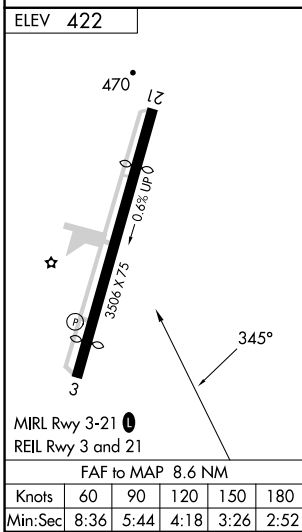
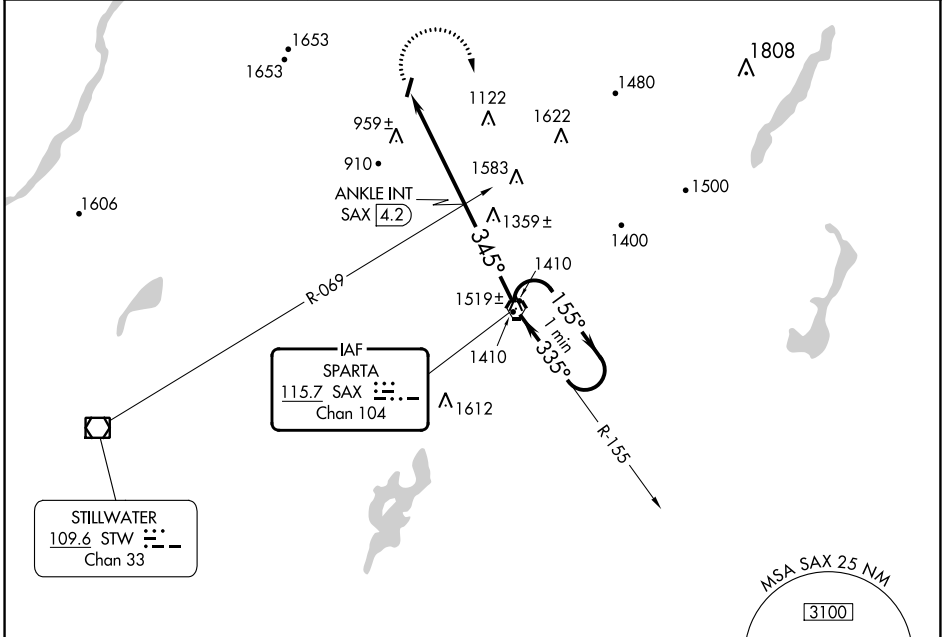
VOR-A

SUSSEX (F'WN)

⚠ When local altimeter setting not received, use Teterboro altimeter setting and increase all MDA 140 feet and ANKLE FIX Minimums Cats A & B visibility ½ mile and Cat C ½ mile. Procedure NA at night. Helicopter visibility reduction below 1 SM NA.

MISSED APPROACH: Climbing right turn to 3000 direct SAX VORTAC and hold.

ASOS 118.525	NEWARK APP CON 127.6 379.9	UNICOM 122.7 (CTAF)
------------------------	--------------------------------------	-------------------------------



CATEGORY	A	B	C	D
C CIRCLING	1820-1¼ 1398 (1400-1¼)	1820-1½ 1398 (1400-1½)	1820-3 1398 (1400-3)	NA
ANKLE FIX MINIMUMS (DUAL VOR RECEIVERS OR DME REQUIRED)				
C CIRCLING	1300-1 878 (900-1)	1300-1¼ 878 (900-1¼)	1300-2½ 878 (900-2½)	NA

NE-2, 03 OCT 2024 to 31 OCT 2024

NE-2, 03 OCT 2024 to 31 OCT 2024