

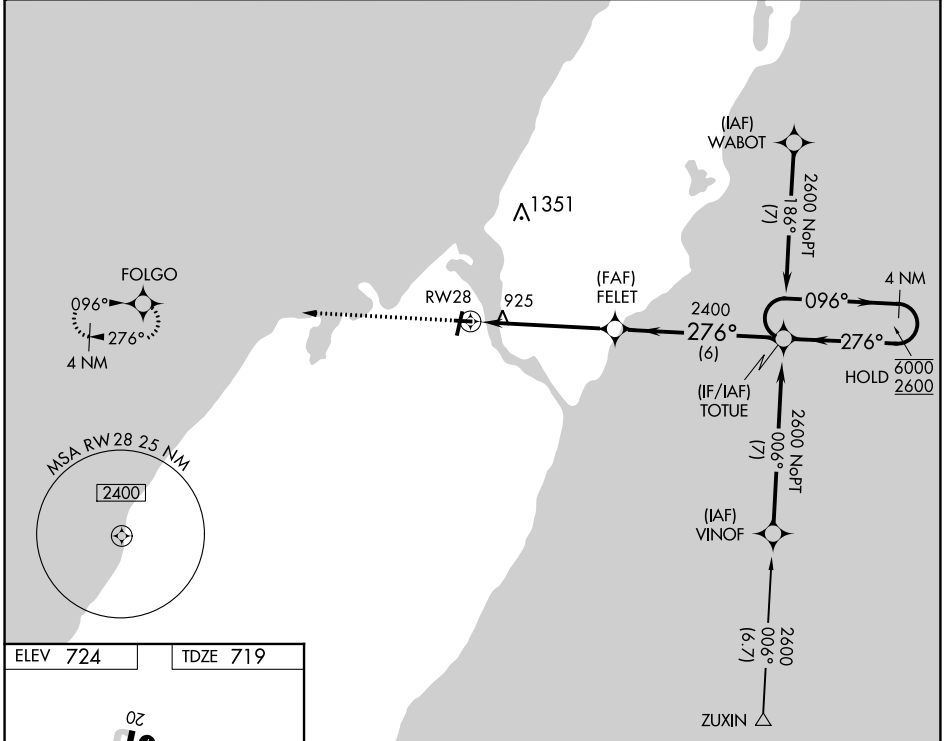
APP CRS	Rwy Idg	3199
276°	TDZE	719
	Apt Elev	724

RNAV (GPS) RWY 28

DOOR COUNTY CHERRYLAND (SUE)

RNP APCH - GPS.	MISSED APPROACH: Climb to 2600 direct FOLGO and hold.
⚠ Rwy 28 helicopter visibility reduction below 3/4 SM NA.	

AWOS-3PT 128.325	GREEN BAY APP CON ★ 119.25 338.2	UNICOM 122.7 (CTAF) 0
----------------------------	--	---------------------------------



EC-3, 31 OCT 2024 to 28 NOV 2024

EC-3, 31 OCT 2024 to 28 NOV 2024

ELEV 724	TDZE 719
----------	----------

RLLS Rwy 2 **Ⓛ**
 REIL Rwys 2, 10, 20 and 28 **Ⓛ**
 MIRL Rwys 2-20 and 10-28 **Ⓛ**

2600	FOLGO	Visual Segment - Obstacles.			4 NM Holding Pattern
		FELET	TOTUE		
1.5 NM to RWY 28		2400	276°	096°	6000 / 2600
1.5		3.7 NM	6 NM		
CATEGORY	A	B	C	D	
LNAV MDA	1240-1	521 (600-1)	1240-1½ 521 (600-1½)	NA	
ⓐ CIRCLING	1280-1	556 (600-1)	1280-1½ 556 (600-1½)	NA	