

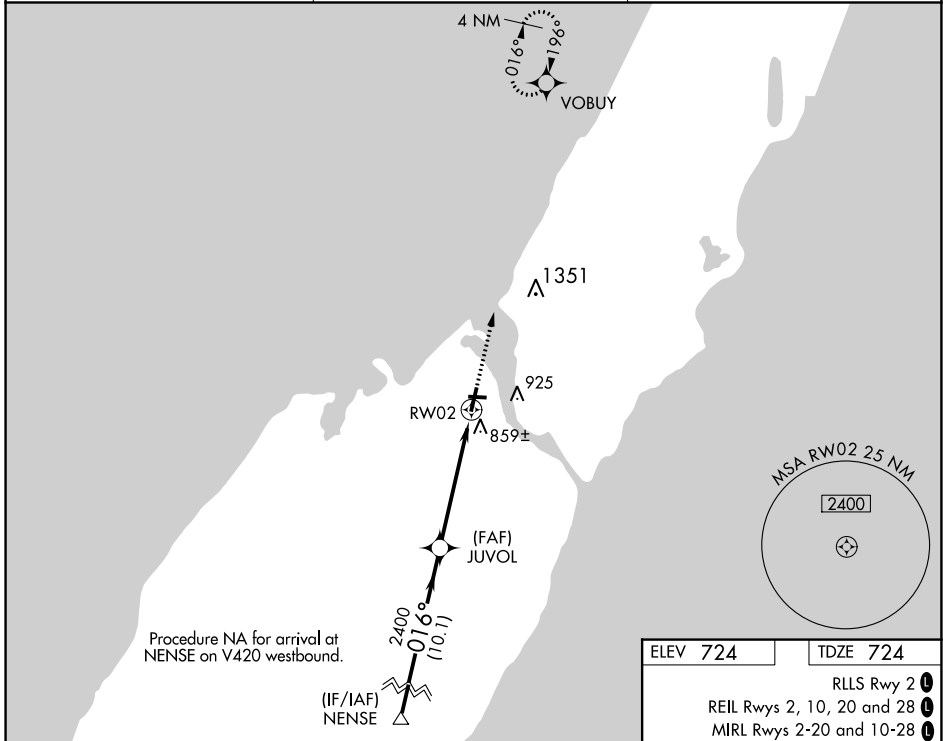
WAAS CH <b>81904</b> <b>W02A</b>	APP CRS <b>016°</b>	Rwy Idg TDZE Apt Elev	<b>4599</b> <b>724</b> <b>724</b>
--	------------------------	-----------------------------	---

# RNAV (GPS) RWY 2

DOOR COUNTY CHERRYLAND (SUE)

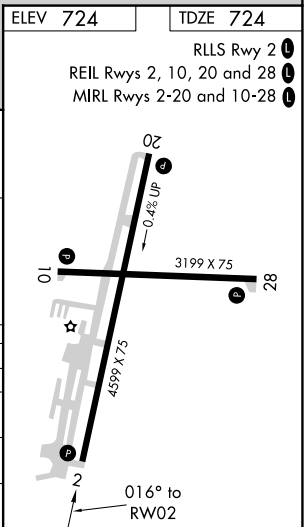
RNP APCH.	<p>▼ Rwy 2 helicopter visibility reduction below 3/4 SM NA. For uncompensated Baro-VNAV systems, LNAV/VNAV NA below -16°C or above 54°C.</p> <p>▲ MISSED APPROACH: Climb to 2600 direct VOBUY and hold.</p>
-----------	---

AWOS-3PT <b>128.325</b>	GREEN BAY APP CON * <b>119.25 338.2</b>	UNICOM <b>122.7(CTAF) 0</b>
----------------------------	--	--------------------------------



EC-3, 31 OCT 2024 to 28 NOV 2024

EC-3, 31 OCT 2024 to 28 NOV 2024



CATEGORY	A		B		C		D		
	LPV	DA	1013-1	289 (300-1)	1120-1	396 (400-1)	1280-1	556 (600-1)	
LNNAV/VNAV	DA	1164-1 1/2	440 (500-1 1/2)	1120-1 1/8	396 (400-1 1/8)	1280-1 1/2	556 (600-1 1/2)	1340-2	616 (700-2)
LNNAV	MDA	1120-1	396 (400-1)	1120-1 1/8	396 (400-1 1/8)	1280-1 1/2	556 (600-1 1/2)	1340-2	616 (700-2)
CIRCLING		1280-1	556 (600-1)	1120-1 1/8	396 (400-1 1/8)	1280-1 1/2	556 (600-1 1/2)	1340-2	616 (700-2)