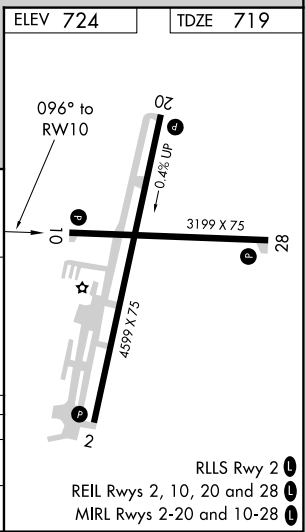
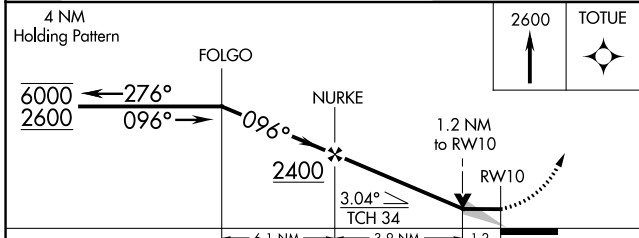
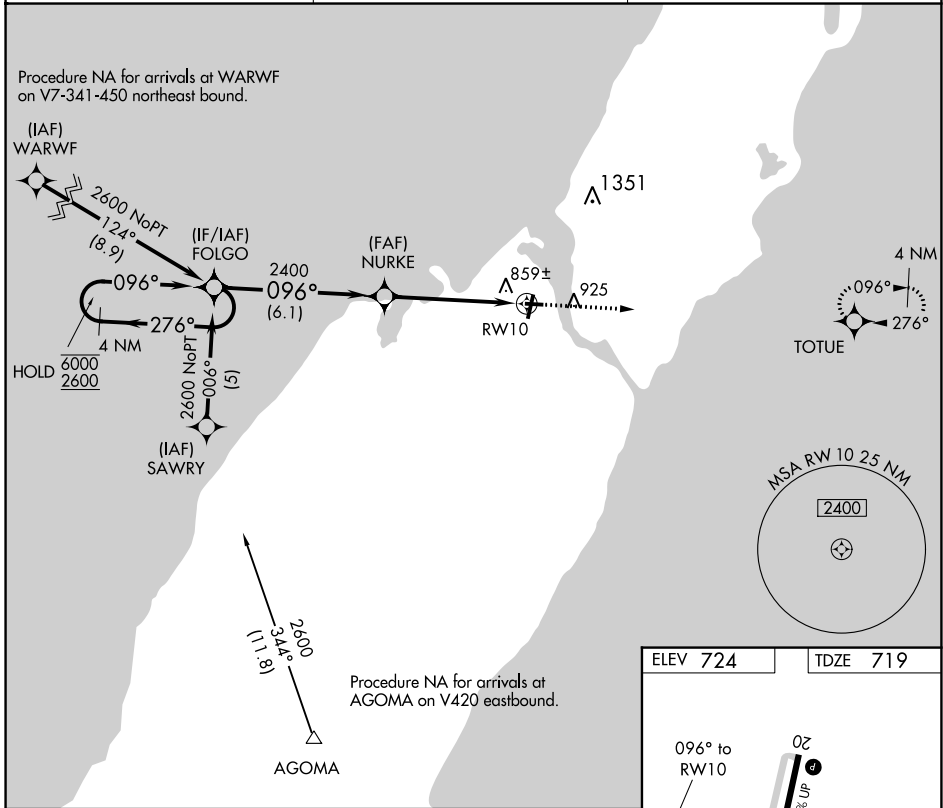


APP CRS	Rwy Idg	3199
096°	TDZE	719
	Apt Elev	724

RNAV (GPS) RWY 10

DOOR COUNTY CHERRYLAND (SUE)

RNP APCH.		MISSED APPROACH: Climb to 2600 direct TOTUE and hold.
AWOS-3PT 128.325	GREEN BAY APP CON ★ 119.25 338.2	UNICOM 122.7 (CTAF)



CATEGORY	A	B	C	D
LNVA MDA	1120-1 401 (400-1)		1120-1½ 401 (400-1½)	NA
CIRCLING	1280-1 556 (600-1)		1280-1½ 556 (600-1½)	NA

EC-3, 31 OCT 2024 to 28 NOV 2024

EC-3, 31 OCT 2024 to 28 NOV 2024