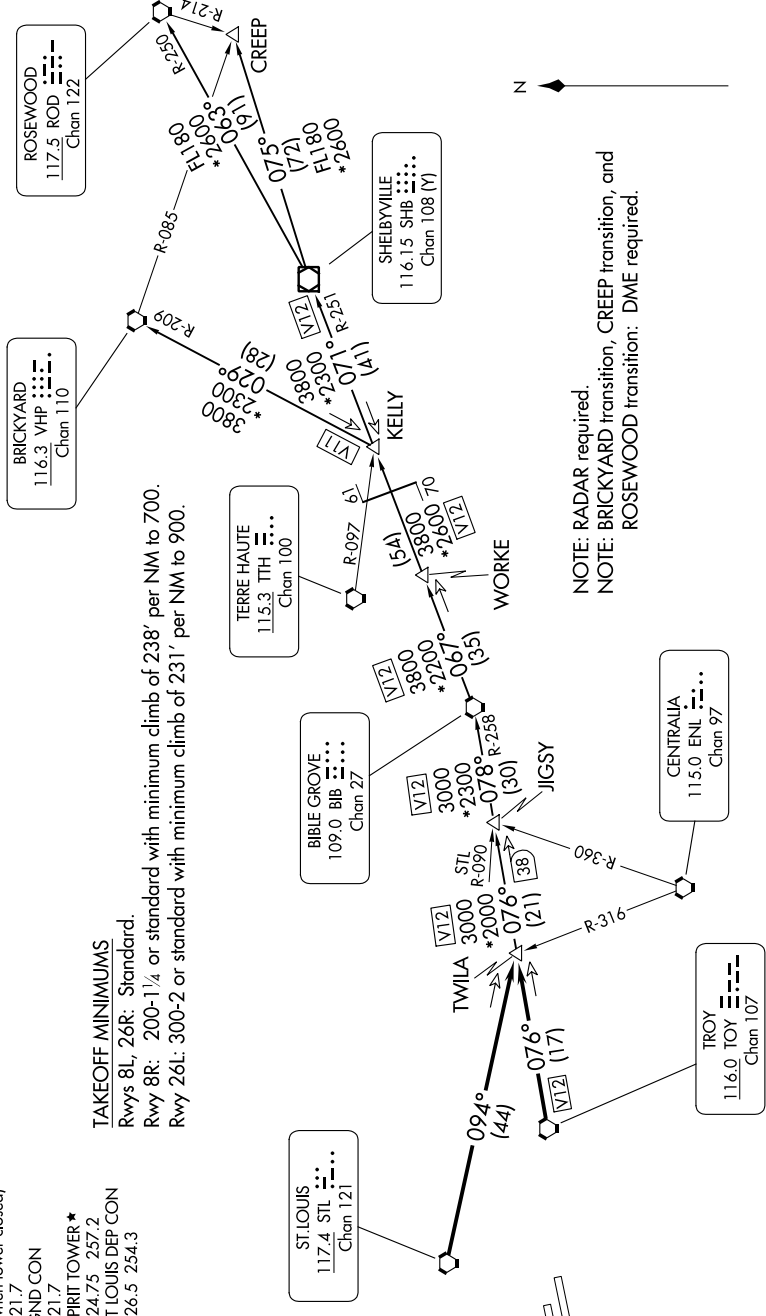


NC-3, 03 OCT 2024 to 31 OCT 2024

- ATIS 134.8
- CINCL DEL 133.1
- ST LOUIS CINCL DEL (when tower closed) 121.7
- GND CON 121.7
- SPRIT TOWER * 124.75 257.2
- ST LOUIS DEP CON 126.5 254.3

TOP ALTITUDE:
(JETS) 3000/
(PROPS) 2500



TAKEOFF MINIMUMS
 Rwy 8L, 26R: Standard.
 Rwy 8R: 200-1/4 or standard with minimum climb of 238' per NM to 700.
 Rwy 26L: 300-2 or standard with minimum climb of 231' per NM to 900.

(CONTINUED ON FOLLOWING PAGE)

NC-3, 03 OCT 2024 to 31 OCT 2024

NOTE: Chart not to scale.