

LOC/DME I-ASX 109.3 Chan 30	APP CRS 023°	Rwy Idg TDZE Apt Elev	5197 826 827
---	------------------------	-----------------------------	---

LOC RWY 2

JOHN F. KENNEDY MEMORIAL (ASX)

DME required.

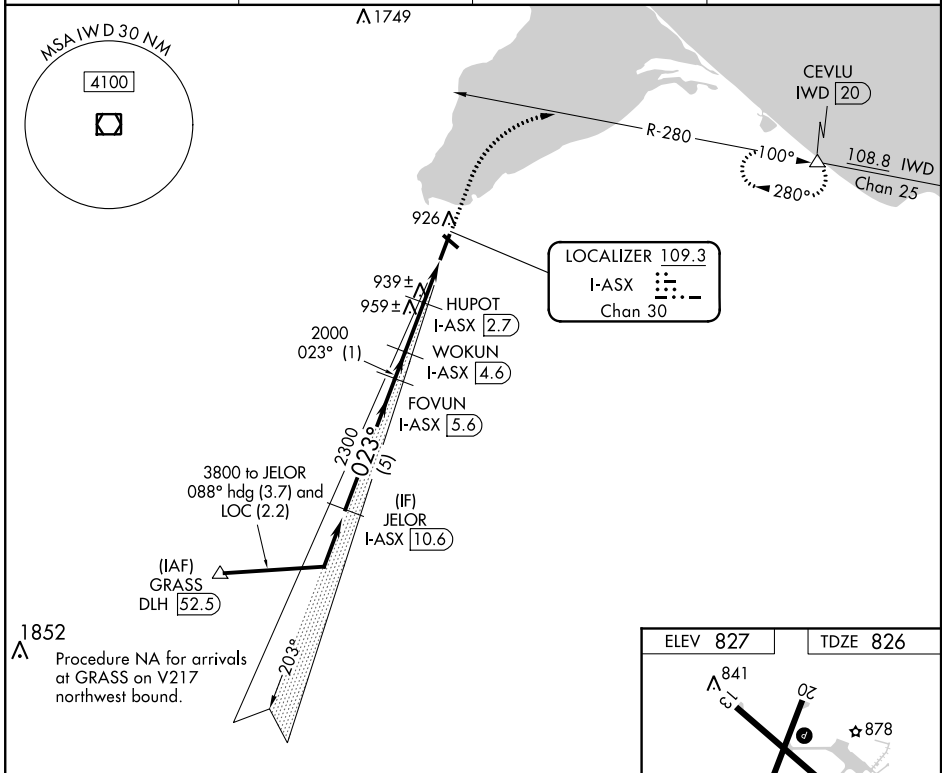
▼ Rwy 2 helicopter visibility reduction below 3/4 SM NA. VDP NA when using Ironwood altimeter setting. When local altimeter setting not received, use Ironwood altimeter setting and increase all MDA 140 feet; increase S-02 Cat C/D visibility 3/4 SM and Circling Cat C/D visibility 1/2 SM.

⚠ NA

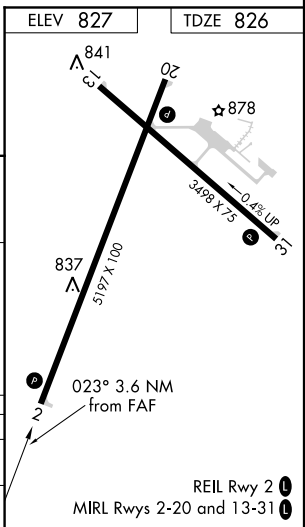
☉ -31°C

MISSED APPROACH: Climb to 2200 then climbing right turn to 3500 on IWD VOR/DME R-280 to CEVLU/IWD 20 DME and hold.

ASOS 126.775	MINNEAPOLIS CENTER 126.45 276.4	GCO 122.25	UNICOM 122.8 (CTAF) 0
------------------------	---	----------------------	---------------------------------



	JELOR I-ASX 10.6	FOVUN I-ASX 5.6	WOKUN I-ASX 4.6	HUPOT I-ASX 2.7	CEVLU I-ASX 1
3800	2300	2000	1400	1400	1400
5 NM	1 NM	1.9 NM	0.6	1.1 NM	
CATEGORY	A	B	C	D	
S-2	1200-1	374 (400-1)	1200-1 1/8	374 (400-1 1/8)	
CIRCLING	1240-1 413 (500-1)	1280-1 453 (500-1)	1440-1 1/4 613 (700-1 1/4)	1560-2 1/4 733 (800-2 1/4)	



LOC RWY 2

EC-3, 10 OCT 2019 to 07 NOV 2019

EC-3, 10 OCT 2019 to 07 NOV 2019