

VOR/DME FFM 110.4 Chan 41	APP CRS 115°	Rwy ldg TDZE 1182 Apt Elev 1183	5639
---	------------------------	---	-------------

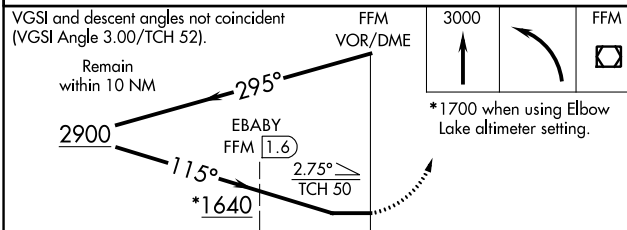
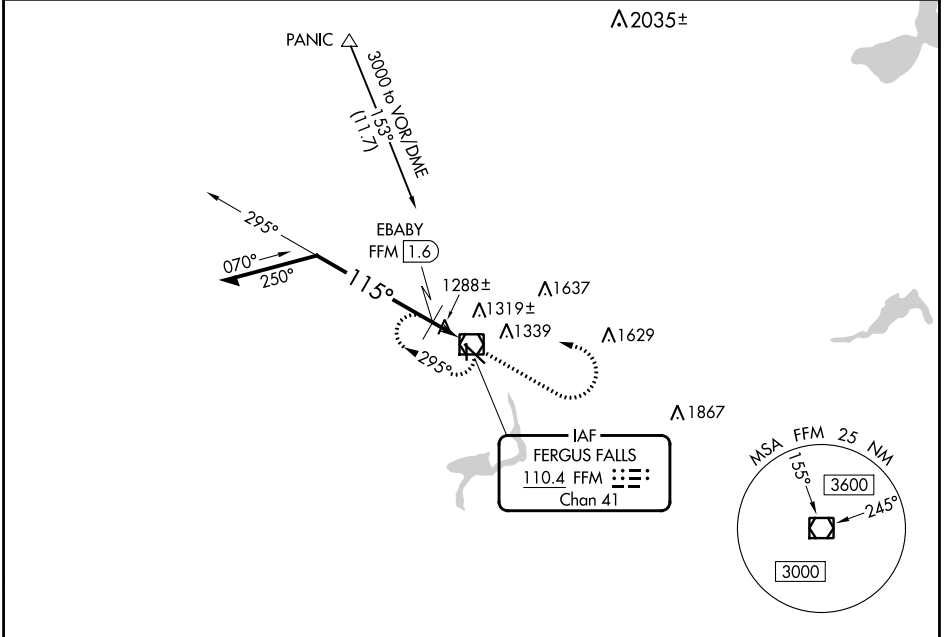
VOR RWY 13

FERGUS FALLS MUNI/EINAR MICKELSON FLD (FFM)

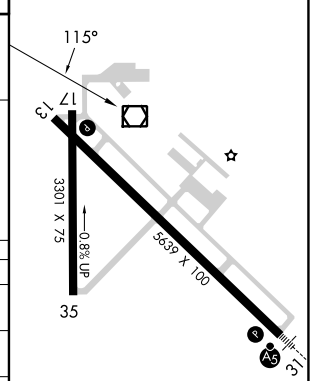
NA When local altimeter setting not received, use Elbow Lake altimeter setting and increase all MDAs 60 feet; increase Circling Cat C/D visibility ¼ SM. EBABY fix minimums increase S-13 Cat C/D and Circling Cat C/D visibility ¼ SM.

MISSED APPROACH: Climb to 3000 then left turn direct FFM VOR/DME and hold.

AWOS-3PT 119.05	MINNEAPOLIS CENTER 126.1 269.2	UNICOM 122.8 (CTAF) 0
---------------------------	--	---------------------------------



ELEV 1183	TDZE 1182
-----------	-----------



CATEGORY	A	B	C	D
S-13	1640-1	458 (500-1)	1640-1 ³ / ₈	458 (500-1 ³ / ₈)
CIRCLING	1640-1 457 (500-1)	1740-1 557 (600-1)	1820-1 ³ / ₄ 637 (700-1 ³ / ₄)	1940-2 ¹ / ₂ 757 (800-2 ¹ / ₂)
EBABY FIX MINIMUMS				
S-13	1580-1	398 (400-1)	1580-1 ¹ / ₈	398 (400-1 ¹ / ₈)
CIRCLING	1640-1 457 (500-1)	1740-1 557 (600-1)	1820-1 ³ / ₄ 637 (700-1 ³ / ₄)	1940-2 ¹ / ₂ 757 (800-2 ¹ / ₂)

VOR RWY 13

NC-1, 03 OCT 2024 to 31 OCT 2024

NC-1, 03 OCT 2024 to 31 OCT 2024