

WAAS CH <b>86815</b> <b>W27A</b>	APP CRS <b>275°</b>	Rwy Idg TDZE Apt Elev	<b>5501</b> <b>529</b> <b>529</b>
--	------------------------	-----------------------------	---

# RNAV (GPS) RWY 27

HUNTINGBURG (HNB)

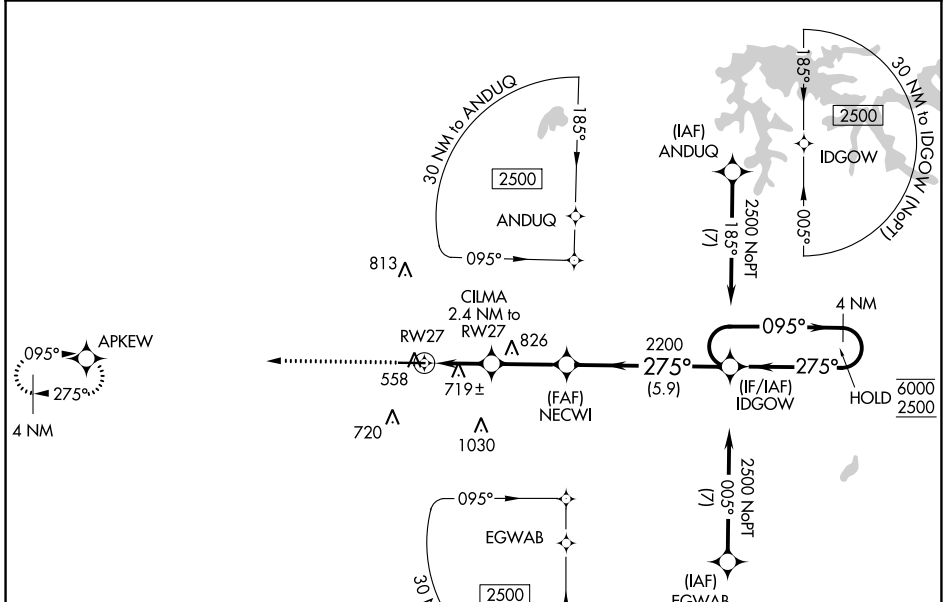
RNP APCH - GPS.

**▼** Rwy 27 helicopter visibility reduction below 3/4 SM NA. For uncompensated Baro-VNAV systems, LNAV/VNAV NA below -16°C or above 54°C.

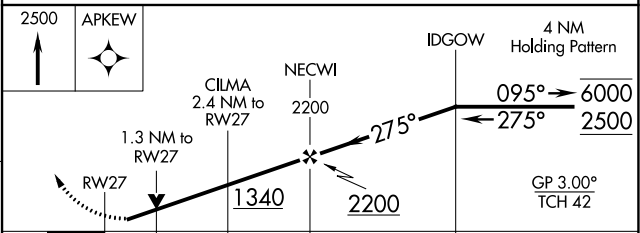
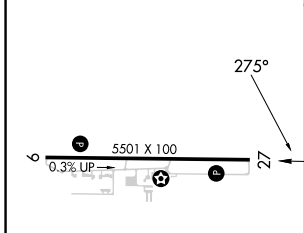
**▲**

MISSED APPROACH: Climb to 2500 direct APKEW and hold.

AWOS-3PT <b>118,250</b>	EVANSVILLE APP CON * <b>124,025 290.9</b>	CLNC DEL <b>118,8</b>	UNICOM <b>122,8 (CTAF) 0</b>
----------------------------	--	--------------------------	---------------------------------



ELEV 529	TDZE 529
----------	----------



CATEGORY	A	B	C	D
LPV DA		729-1	200 (200-1)	
LNAV/VNAV DA		1038-1 3/8	509 (600-1 3/8)	
LNAV MDA	980-1	451 (500-1)	980-1 3/8	451 (500-1 3/8)
<b>C</b> CIRCLING	1020-1 491 (500-1)	1040-1 511 (600-1)	1040-1 1/2 511 (600-1 1/2)	1380-2 3/4 851 (900-2 3/4)

MIRL Rwy 9-27 **0**  
REIL Rwy 9 and 27 **0**

HUNTINGBURG, INDIANA  
Amdt 1 12AUG21

# HUNTINGBURG (HNB)

## RNAV (GPS) RWY 27

EC-2, 08 AUG 2024 to 05 SEP 2024

EC-2, 08 AUG 2024 to 05 SEP 2024