

WAAS CH <b>93699</b> <b>W18A</b>	APP CRS <b>185°</b>	Rwy Idg TDZE Apt Elev	<b>6503</b> <b>866</b> <b>866</b>
--	------------------------	-----------------------------	---

# RNAV (GPS) RWY 18

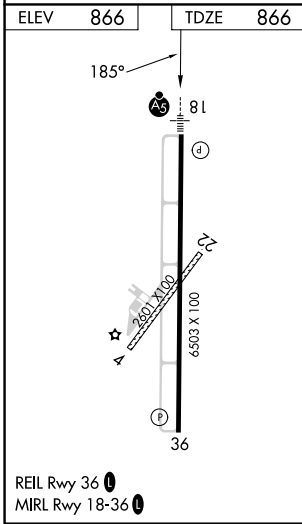
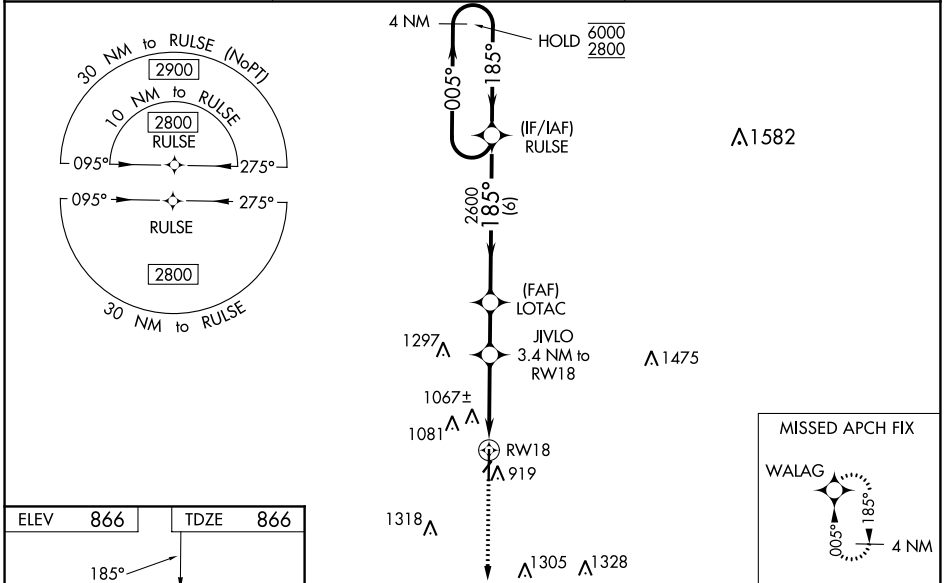
METTEL FLD (CEV)

**RNP APCH.**

**NA** For uncompensated Baro-VNAV systems, LNAV/VNAV NA below -16°C or above 54°C. VDP and Baro-VNAV NA when using James M. Cox Dayton Intl altimeter setting. Circling Rwy 4, 22 NA at night. For inop ALS increase LPV all Cats visibility to 1 SM, LNAV/VNAV all Cats visibility to 1½ SM, and LNAV Cats A/B visibility to 1 SM. For inop ALS when using James M. Cox Dayton Intl altimeter setting, increase LPV all Cats visibility to 1 SM, LNAV/VNAV all Cats visibility to 1½ SM. When local altimeter setting not received, use James M. Cox Dayton Intl altimeter setting and increase all DA 121 feet and all MDA 140 feet: increase LPV and LNAV/VNAV all Cats and LNAV Cat C/D visibility ¾ SM, and Circling Cat C/D visibility ½ SM.

**MALSRL**  
MISSED APPROACH:  
Climb to 2800 direct  
WALAG and hold.

<b>AWOS-3</b> <b>118.325</b>	<b>COLUMBUS APP CON</b> <b>134.45 352.05</b>	<b>UNICOM</b> <b>122.8 (CTAF)</b>
---------------------------------	---	--------------------------------------



2800	WALAG	LOTAC	RULSE	4 NM Holding Pattern
*LNAV only	RWY 18	JVLO 3.4 NM to RWY 18	2600	185° → 6000 ← 005° 2800
	*1.3 NM to RWY 18	*2000	2600	GP 3.00° TCH 46
	1.3 NM	2.1 NM	1.9 NM	6 NM
CATEGORY	A	B	C	D
LPV DA		1116-½	250 (300-½)	
LNAV/VNAV DA		1385-1	519 (600-1)	
LNAV MDA	1320-½	454 (500-½)	1320-⅞	454 (500-⅞)
<b>CIRCLING</b>	1440-1 574 (600-1)	1540-1 674 (700-1)	1620-2¼ 754 (800-2¼)	1620-2½ 754 (800-2½)

# RNAV (GPS) RWY 18

METTEL FLD (CEV)

EC-2, 31 OCT 2024 to 28 NOV 2024

EC-2, 31 OCT 2024 to 28 NOV 2024