


LOC I-SQK 108.35	APP CRS 185°	Rwy Idg 6503
		TDZE 866
		Apt Elev 866

ILS or LOC RWY 18

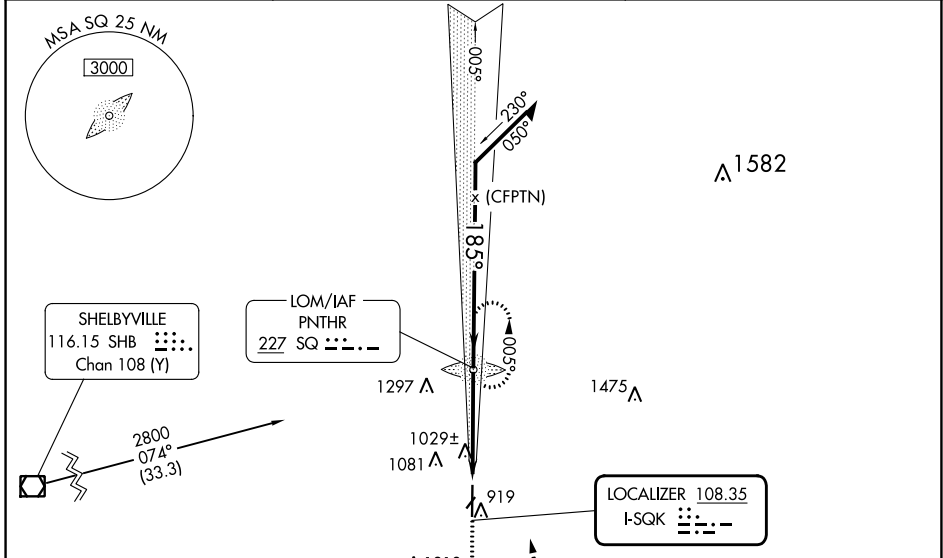
METTEL FLD (CEV)

ADF required.

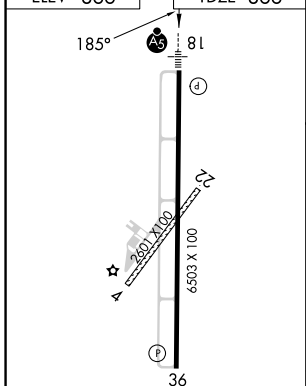
NA Circling NA to Rwys 4 and 22. For inop MALS, increase S-LOC 18 Cats C/D visibility to 1 1/2 mile. When local altimeter setting not received, use James M Cox Dayton Intl altimeter setting and increase ILS DA to 1237 feet and visibility all Cats to 3/4 mile, increase all MDA 140 feet and LOC Cats C/D visibility to 1 1/2 mile, and Circling Cat B visibility to 1 1/4 miles and Cat C to 2 3/4 miles and Cat D to 3 miles. When using James M Cox Dayton Intl altimeter setting: for inop MALS, increase S-ILS 18 all Cats visibility to 1 mile and increase S-LOC 18 Cat A/B visibility to 1 mile and Cat C/D to 1 1/2 mile.



MALS  MISSED APPROACH: Climb to 2800 then left turn direct SQ LOM and hold.

AWOS-3 118.325	COLUMBUS APP CON 134.45 352.05	UNICOM 122.8 (CTAF) 
--------------------------	--	---



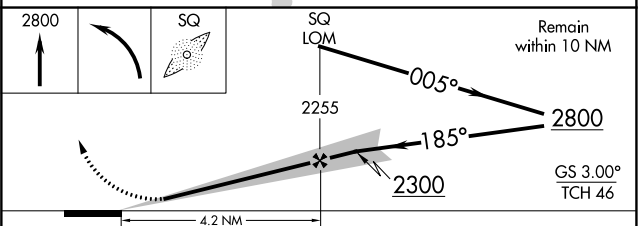
ELEV 866	TDZE 866
----------	----------




MIRL Rwy 18-36 
REIL Rwy 36 

FAF to MAP 4.2 NM

Knots	60	90	120	150	180
Min:Sec	4:12	2:48	2:06	1:41	1:24



CATEGORY	A	B	C	D
S-ILS 18	1116-1/2		250 (300-1/2)	
S-LOC 18	1280-1/2	414 (500-1/2)	1280-3/4	414 (500-3/4)
 CIRCLING	1440-1 574 (600-1)	1540-1 674 (700-1)	1620-2 1/4 754 (800-2 1/4)	1620-2 1/2 754 (800-2 1/2)

EC-2, 31 OCT 2024 to 28 NOV 2024

EC-2, 31 OCT 2024 to 28 NOV 2024