

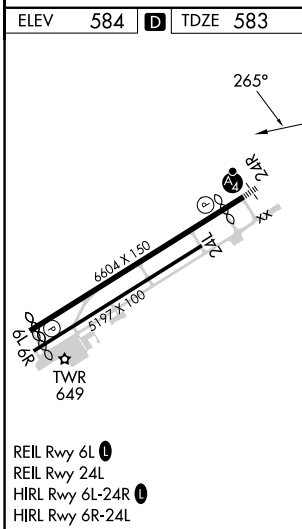
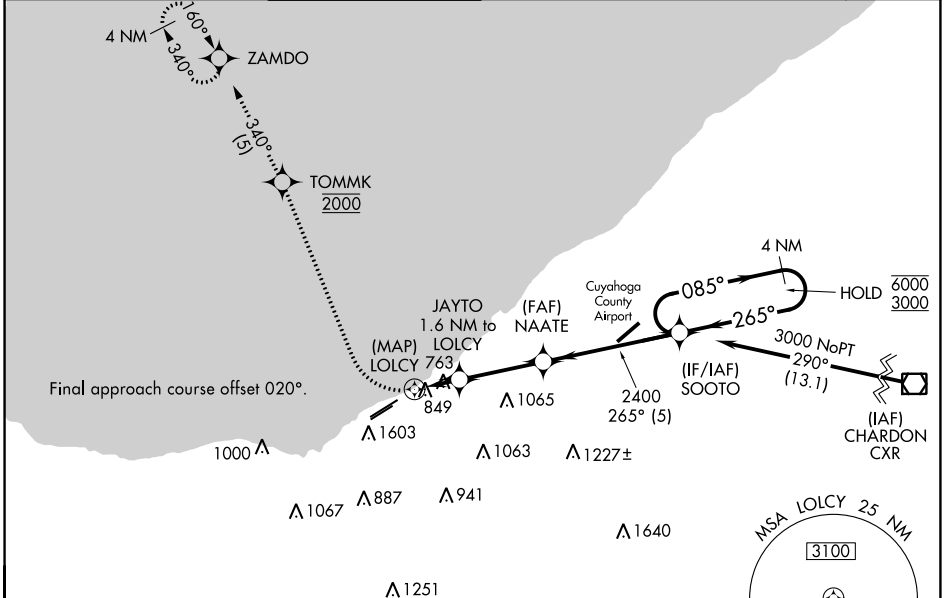
WAAS CH <b>77621</b> <b>W24A</b>	APP CRS <b>265°</b>	Rwy Idg TDZE Apt Elev	<b>6003</b> <b>583</b> <b>584</b>
--	------------------------	-----------------------------	---

# RNAV (GPS) RWY 24R

BURKE LAKEFRONT (BKL)

RNP APCH.		<b>MISSED APPROACH:</b> Climbing right turn direct TOMMK, cross TOMMK at 2000, then climb to 3000 on track 340° to ZAMDO and hold.
<p>Circling Rwy 6R NA at night. Rwy 24R helicopter visibility reduction below 3/4 SM NA. Circling NA SE of Rwy 6R and 24L. For inop ALS, increase LNAV Cat C/D visibility to 1 3/8 SM.</p>		

ATIS <b>125.25</b>	CLEVELAND APP CON <b>125.35 346.325</b>	LAKEFRONT TOWER ★ <b>124.3 (CTAF) 0 339.8</b>	GND CON <b>121.9 339.8</b>	CLNC DEL <b>339.8</b>	CLNC DEL <b>121.9</b> (when twr closed)	UNICOM <b>122.95 0</b>
-----------------------	--	--	-------------------------------	--------------------------	---	---------------------------



ELEV 584	<b>D</b>	TDZE 583		
2049 ▲	▲ 1599			
TOMMK 2000	3000 tr 340°	ZAMDO		
LOLCY	JAYTO 1.6 NM to LOLCY 3.00° TCH 42	NAATE		
1420	2400	SOOTO		
0.9	1.6 NM	3.1 NM	5 NM	
4 NM Holding Pattern	SOOTO	085° → 6000	← 265° 3000	
CATEGORY	A	B	C	D
LP MDA	1020-3/4	437 (500-3/4)	1020-1	437 (500-1)
LNAV MDA	1100-3/4	517 (600-3/4)	1100-1 1/4	517 (600-1 1/4)
<b>C</b> CIRCLING	1100-1	516 (600-1)	1140-1 1/2	1200-2
			556 (600-1 1/2)	616 (700-2)

EC-2, 31 OCT 2024 to 28 NOV 2024

EC-2, 31 OCT 2024 to 28 NOV 2024