


LOC/DME I-BFT <b>109.75</b> Chan <b>34</b> (Y)	APP CRS <b>245°</b>	Rwy Idg <b>24R 24L</b> TDZE <b>6003 5197</b> 583 584 Apt Elev <b>584 584</b>
--	------------------------	--

# ILS or LOC RWY 24R


BURKE LAKEFRONT (BKL)

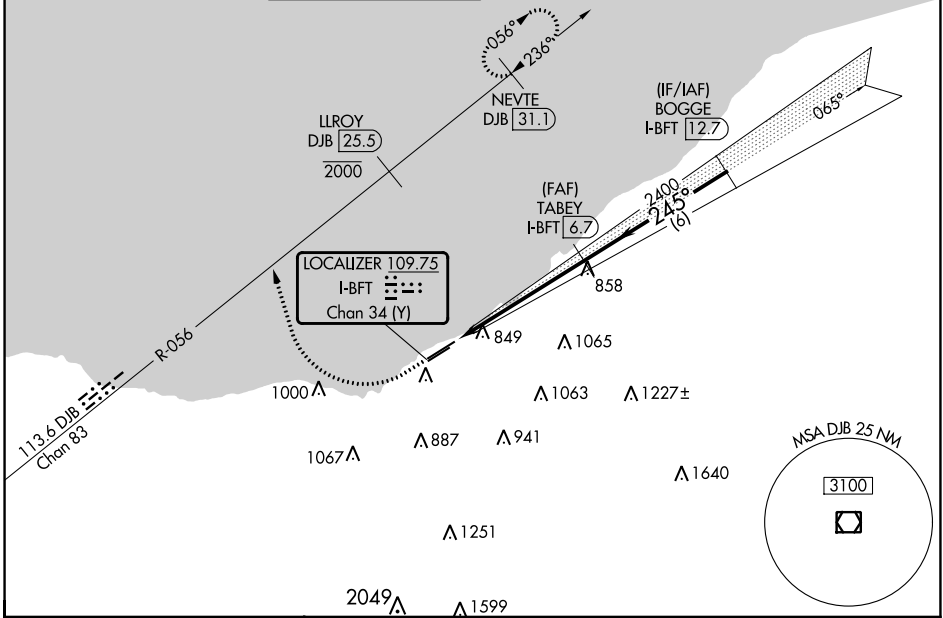
DME required. RADAR required for procedure entry.

⚠ Circling Rwy 6R NA at night. Rwy 24R helicopter visibility reduction below 3/4 SM NA. Circling NA southeast of Rwy 6R-24L. S-ILS minimums NA when control tower closed.

MALSF 


MISSED APPROACH: Climb to 1120 then climbing right turn heading 350° and DJB VOR/DME R-056 to cross LLROY/DJB 25.5 DME at or below 2000 then climb to 3000 on DJB VOR/DME R-056 northeast course to NEVTE/DJB 31.1 DME and hold.

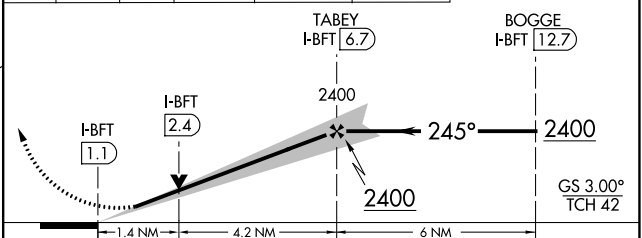
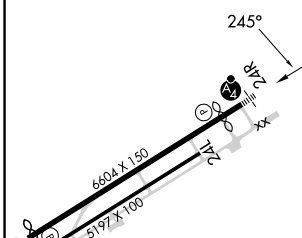
ATIS <b>125.25</b>	CLEVELAND APP CON <b>125.35 346.325</b>	LAKEFRONT TOWER ★ <b>124.3</b> (CTAF) <b>0 339.8</b>	GND CON <b>121.9 339.8</b>	CLNC DEL <b>339.8</b>	CLNC DEL <b>121.9</b> (when twr closed)	UNICOM <b>122.95</b> 
-----------------------	--	---	-------------------------------	--------------------------	---	---



EC-2, 05 SEP 2024 to 03 OCT 2024

EC-2, 05 SEP 2024 to 03 OCT 2024

ELEV 584	<b>D</b> TDZE 24R 583 TDZE 24L 584	1120		hdg 350°	DJB R-056	LLROY DJB [25.5] 2000	3000	DJB R-056 NE crs	NEVTE DJB [31.1]
----------	---------------------------------------	------	--	----------	-----------	--------------------------	------	---------------------	------------------



CATEGORY	A	B	C	D
S-ILS 24R	916-3/4 333 (400-3/4)			
S-LOC 24R	1060-3/4	477 (500-3/4)	1060-1 1/8	477 (500-1 1/8)
SIDESTEP 24L	1060-1	476 (500-1)	1060-1 1/2	476 (500-2)
CIRCLING	1060-1	476 (500-1)	1140-1 1/2	1200-2
			556 (600-1 1/2)	616 (700-2)