

(AHMET4.KKIDS) 20086

AL-5370 (FAA)

BURKE LAKEFRONT (BKL)  
CLEVELAND, OHIO

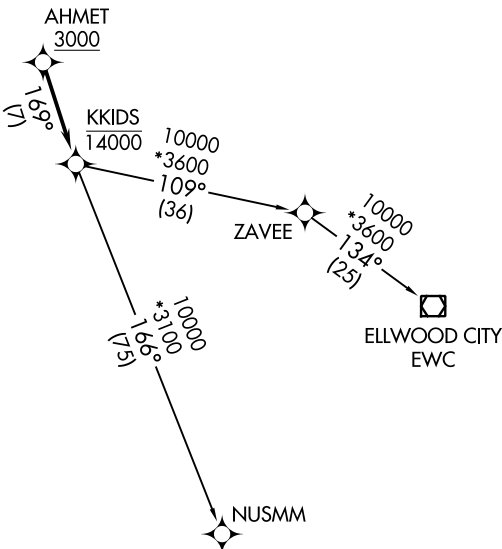
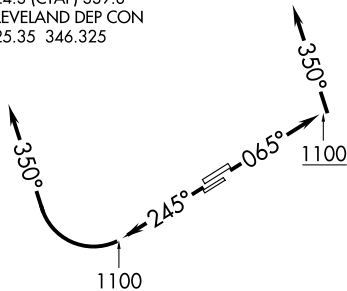
# AHMET FOUR DEPARTURE (RNAV)

**TOP ALTITUDE:  
ASSIGNED BY ATC**

ATIS  
125.25  
CLNC DEL  
339.8  
121.9 (when tower closed)  
GND CON  
121.9 339.8  
LAKEFRONT TOWER ★  
124.3 (CTAF) 339.8  
CLEVELAND DEP CON  
125.35 346.325

**TAKEOFF MINIMUMS:**

Rwys 6L/R, 24R: Standard with minimum climb of 500' per NM to 1100.  
Rwy 24L: 400-1<sup>3</sup>/<sub>8</sub> or standard with minimum climb of 757' per NM to 1000.



NOTE: RNAV 1.  
NOTE: RADAR required.  
NOTE: DME/DME/IRU or GPS required.

NOTE: Chart not to scale.



## DEPARTURE ROUTE DESCRIPTION

**TAKEOFF RUNWAYS 6L/R:** Climb on heading 065° to 1100, then on heading 350° or as assigned by ATC, maintain 2000 (do not climb above 2000) for RADAR vectors to cross AHMET at or above 3000, thence....

**TAKEOFF RUNWAYS 24L/R:** Climb on heading 245° to 1100, then right turn to heading 350° or as assigned by ATC, maintain 2000 (do not climb above 2000) for RADAR vectors to cross AHMET at or above 3000, thence....

....on track 169° to cross KKIDS at or below 14000, then on (transition).  
Maintain altitude assigned by ATC, expect filed altitude ten minutes after departure.

ELLWOOD CITY TRANSITION (AHMET4.EWC)  
NUSMM TRANSITION (AHMET4.NUSMM)

**AHMET FOUR DEPARTURE (RNAV)**  
(AHMET4.KKIDS) 26MAR20

CLEVELAND, OHIO  
BURKE LAKEFRONT (BKL)

EC-2, 05 SEP 2024 to 03 OCT 2024

EC-2, 05 SEP 2024 to 03 OCT 2024