

(SNDOA3.SNDOA) 18312

AL-5369 (FAA)

SHENANDOAH VALLEY RGNL (SHD)

SHENANDOAH THREE DEPARTURE

STAUNTON/WAYNESBORO/HARRISONBURG, VIRGINIA

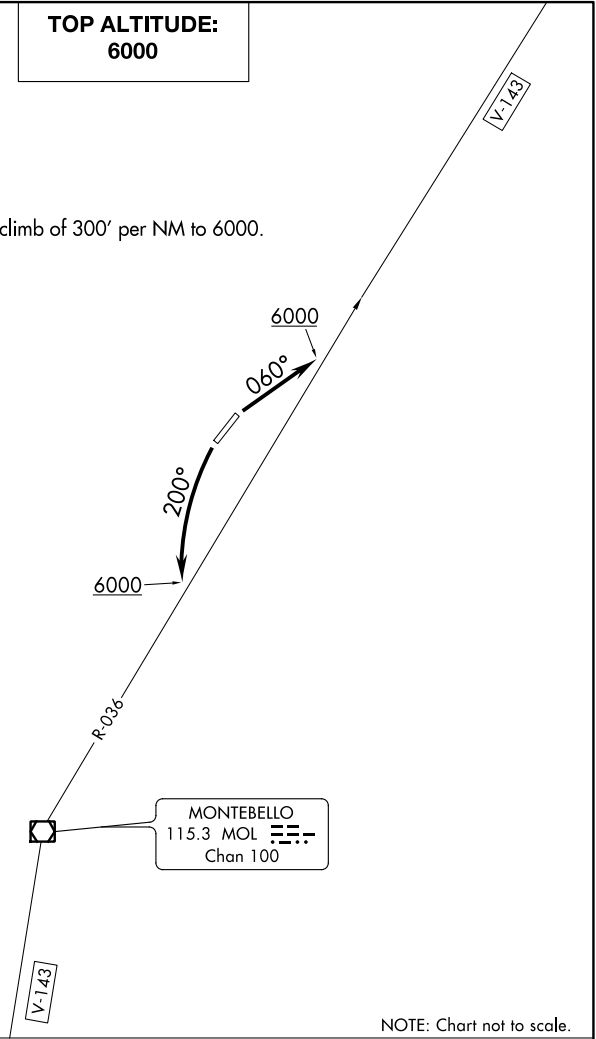
AWOS-3
124.925
CTAF
123.0
CLNC
118.35
POTOMAC DEP CON
132.85 323.125

**TOP ALTITUDE:
6000**

TAKEOFF MINIMUMS:

Rwys 5, 23: Standard with minimum climb of 300' per NM to 6000.

NOTE: RADAR required.



NOTE: Chart not to scale.



DEPARTURE ROUTE DESCRIPTION

TAKEOFF RUNWAY 5: Climb heading 060° to 6000 to intercept MOL VOR/DME R-036 outbound, thence....

TAKEOFF RUNWAY 23: Climbing left turn to 6000 heading 200° to intercept MOL VOR/DME R-036 inbound, thence....

....expect radar vectors to filed/assigned route. Expect clearance to filed altitude/flight level 10 minutes after departure.

SHENANDOAH THREE DEPARTURE

STAUNTON/WAYNESBORO/HARRISONBURG, VIRGINIA

SHENANDOAH VALLEY RGNL (SHD)

(SNDOA3.SNDOA) 10NOV16

NE-3, 18 MAY 2023 to 15 JUN 2023

NE-3, 18 MAY 2023 to 15 JUN 2023