

WAAS CH <b>90522</b> <b>W36A</b>	APP CRS <b>008°</b>	Rwy Idg TDZE Apt Elev	<b>5000</b> <b>285</b> <b>285</b>
--	------------------------	-----------------------------	---

# RNAV (GPS) RWY 36

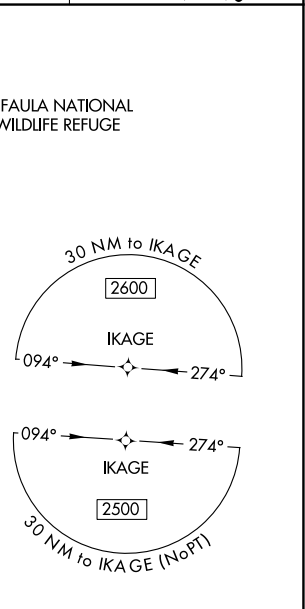
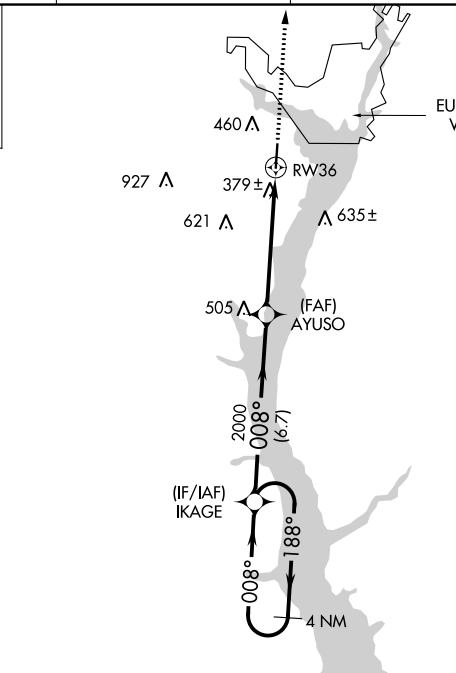
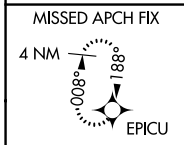
WEEDON FLD (EUF)

RNP APCH - GPS.

**NA** When local altimeter setting not received, use Columbus, GA altimeter setting and increase LPV DA to 633 feet and all visibilities  $\frac{1}{8}$  SM; increase LNAV/VNAV DA to 782 feet; increase all MDAs 40 feet and LNAV and Circling visibility Cats C and D  $\frac{1}{4}$  SM. Rwy 36 helicopter visibility reduction below  $\frac{3}{4}$  SM NA. For uncompensated Baro-VNAV systems, LNAV/VNAV NA below -15°C or above 54°C. Baro-VNAV and VDP NA when using Columbus, GA altimeter setting.

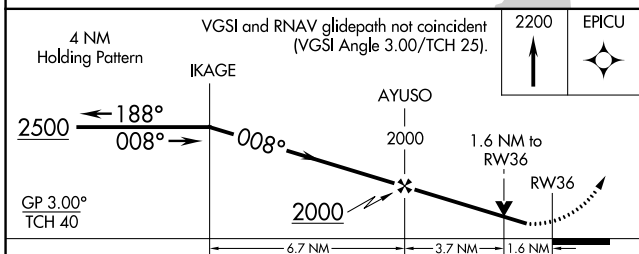
**MISSED APPROACH:**  
Climb to 2200 direct EPICU and hold.

ASOS <b>128.325</b>	ATLANTA APP CON * <b>125.5 323.1</b>	CLNC DEL <b>134.25 339.8</b>	UNICOM <b>122.8 (CTAF)</b>
------------------------	---	---------------------------------	-------------------------------

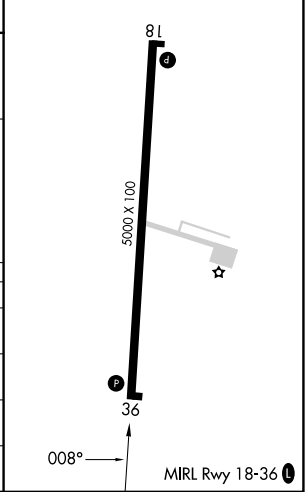


SE-4, 31 OCT 2024 to 28 NOV 2024

SE-4, 31 OCT 2024 to 28 NOV 2024



ELEV 285	TDZE 285
----------	----------



CATEGORY	A	B	C	D
LPV DA	600-1		315 (400-1)	
LNAV/VNAV DA	749-1 $\frac{3}{8}$		464 (500-1 $\frac{3}{8}$ )	
LNAV MDA	800-1 515 (600-1)		800-1 $\frac{3}{8}$ 515 (600-1 $\frac{3}{8}$ )	
CIRCLING	920-1 635 (700-1)		1060-2 $\frac{1}{4}$ 775 (800-2 $\frac{1}{4}$ ) 1060-2 $\frac{1}{2}$ 775 (800-2 $\frac{1}{2}$ )	