

WAAS CH <b>40106</b> <b>W06A</b>	APP CRS <b>056°</b>	Rwy Idg <b>5006</b> TDZE <b>310</b> Apt Elev <b>310</b>
--	------------------------	---

# RNAV (GPS) RWY 6

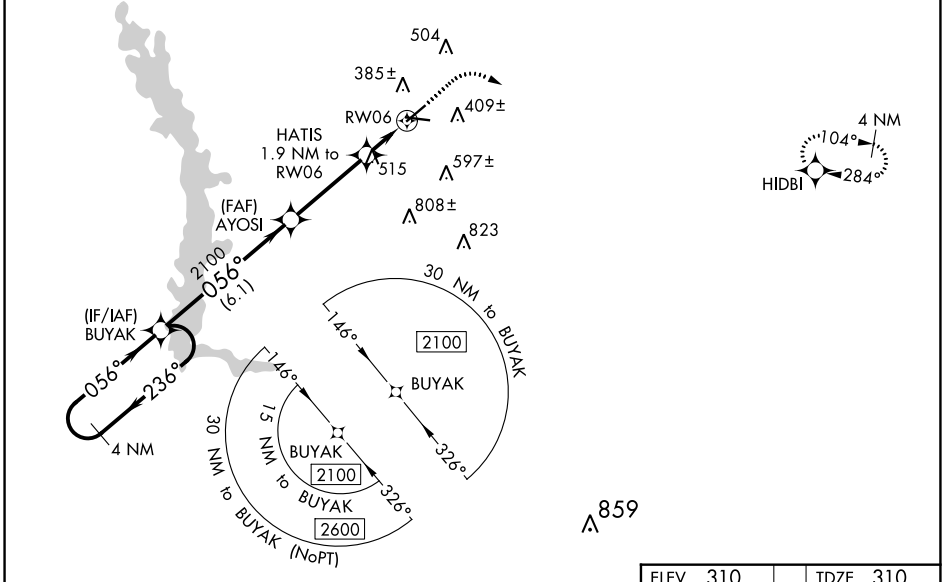
CRISP COUNTY-CORDELE (CKF)

RNP APCH-GPS.

**⚠** For uncompensated Baro-VNAV systems, LNAV/VNAV NA below -15°C or above 54°C. Rwy 6 helicopter visibility reduction below 3/4 SM NA. Straight-in Rwy 6 NA at night, Circling Rwy 6, 24, 28 NA at night.

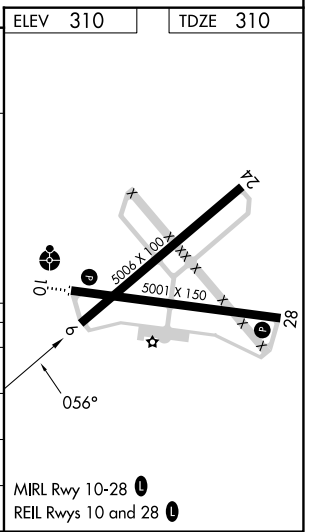
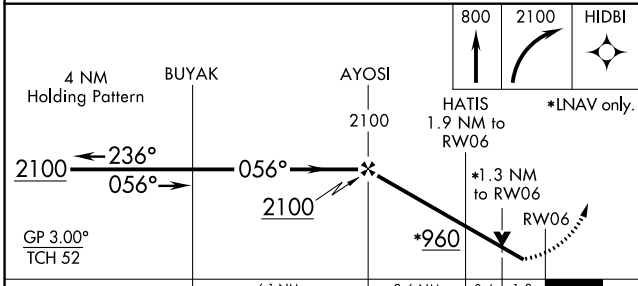
MISSED APPROACH: Climb to 800 then climbing right turn to 2100 direct HIDBI and hold.

AWOS-3PT <b>119.325</b>	JACKSONVILLE CENTER <b>125.75 363.075</b>	UNICOM <b>123.050</b> (CTAF) <b>📻</b>
----------------------------	--	--



SE-4, 31 OCT 2024 to 28 NOV 2024

SE-4, 31 OCT 2024 to 28 NOV 2024



CATEGORY	A	B	C	D
LPV DA	573-1		263 (300-1)	
LNAV/VNAV DA	647-1		337 (300-1)	
LNAV MDA	780-1	470 (500-1)	780-1 3/8	470 (500-1 3/8)
<b>C</b> CIRCLING	820-1	510 (600-1)	1080-2 1/4 770 (800-2 1/4)	1160-2 3/4 850 (900-2 3/4)