

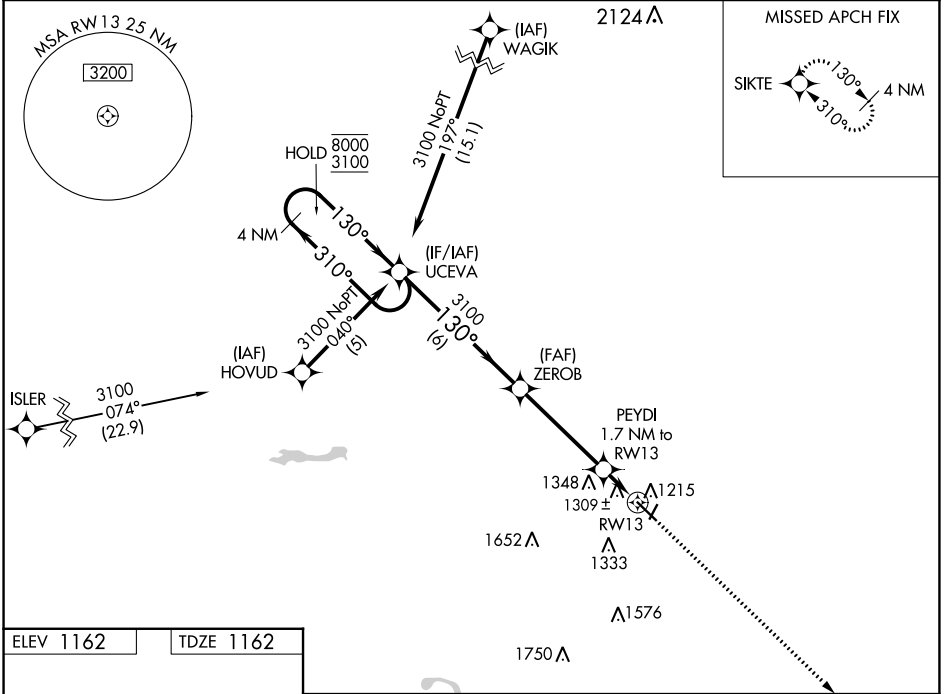
WAAS CH 45812 W13A	APP CRS 130°	Rwy Idg TDZE 1162 Apt Elev 1162	5503
--	------------------------	---	-------------

RNAV (GPS) RWY 13

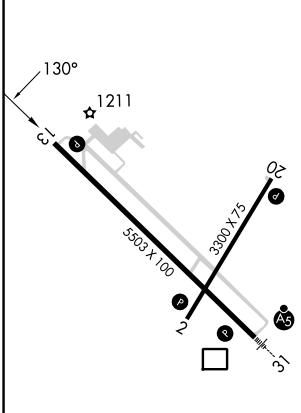
FAIRMONT MUNI (FRM)

RNP APCH-GPS.	MISSED APPROACH: Climb to 3100 direct SIKTE and hold.
<p>For uncompensated Baro-VNAV systems, procedure NA below -17°C or above 54°C. Rwy 13 helicopter visibility reduction below 3/4 SM NA.</p>	

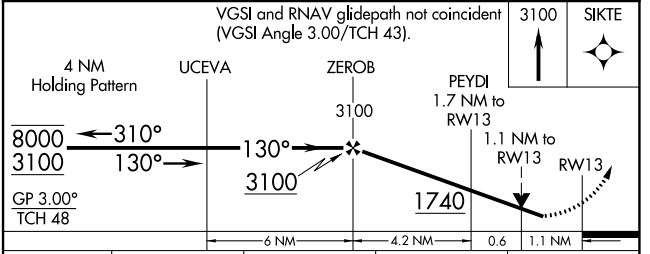
AWOS-3PT 120.025	MINNEAPOLIS CENTER 127.75 257.7	UNICOM 122.8 (CTAF)
----------------------------	---	-------------------------------



ELEV 1162	TDZE 1162
-----------	-----------



- HIRL Rwy 13-31
- MIRL Rwy 2-20
- REIL Rwy 2, 13 and 20



CATEGORY	A	B	C	D
LPV DA	1460-1 298 (300-1)			
LNAV/VNAV DA	1695-2 533 (600-2)			
LNAV MDA	1560-1 398 (400-1)	1560-1 1/8 398 (400-1 1/8)		1560-1 1/4 398 (400-1 1/4)
CIRCLING	1660-1 498 (500-1)	1980-2 1/2 818 (900-2 1/2)		1980-2 3/4 818 (900-2 3/4)

NC-1, 31 OCT 2024 to 28 NOV 2024

NC-1, 31 OCT 2024 to 28 NOV 2024