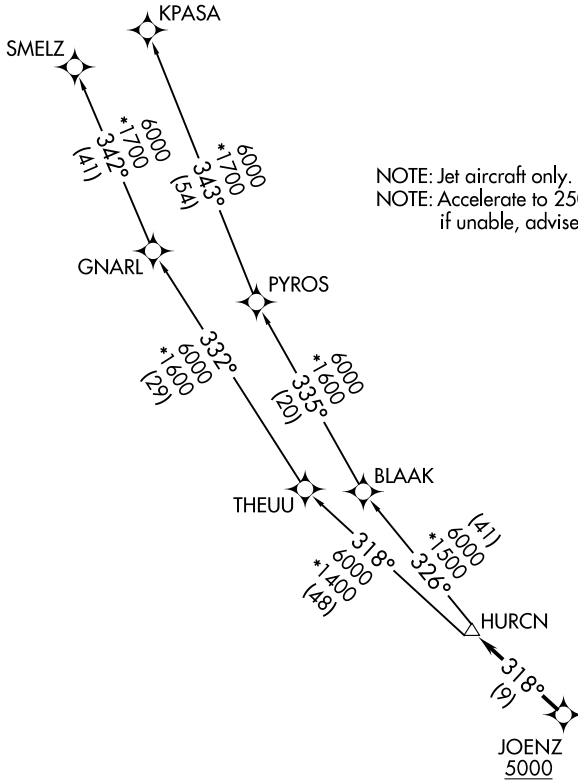


RNAV-1 DME/DME/IRU or GPS.  
 RADAR required.

**TOP ALTITUDE:  
 ASSIGNED BY ATC**

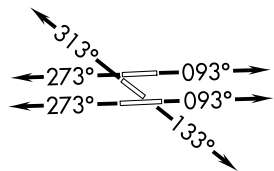
MIAMI DEP CON  
 125.5 354.1  
 ATIS  
 124.0  
 CLNC DEL  
 133.0  
 GND CON  
 121.7  
 MIAMI EXEC TOWER\*  
 118.9 (CTAF)



NOTE: Jet aircraft only.  
 NOTE: Accelerate to 250K until leaving 10000,  
 if unable, advise ATC.

**TAKEOFF MINIMUMS**

- Rwy 9L: Standard with minimum climb of 500'/NM to 1300.
- Rwy 9R: Standard with minimum climb of 500'/NM to 1500.
- Rwy 13: Standard with minimum climb of 500'/NM to 1800.
- Rwy 27L: Standard with minimum climb of 500'/NM to 1900.
- Rwy 27R: Standard with minimum climb of 500'/NM to 1700.
- Rwy 31: Standard with minimum climb of 500'/NM to 1400.



NOTE: Chart not to scale.

(CONTINUED ON FOLLOWING PAGE)

SE-3, 31 OCT 2024 to 28 NOV 2024

SE-3, 31 OCT 2024 to 28 NOV 2024