

WAAS CH 77811 W01A	APP CRS 010°	Rwy Idg 6501 TDZE 1133 Apt Elev 1182
--	------------------------	---

RNAV (GPS) RWY 1

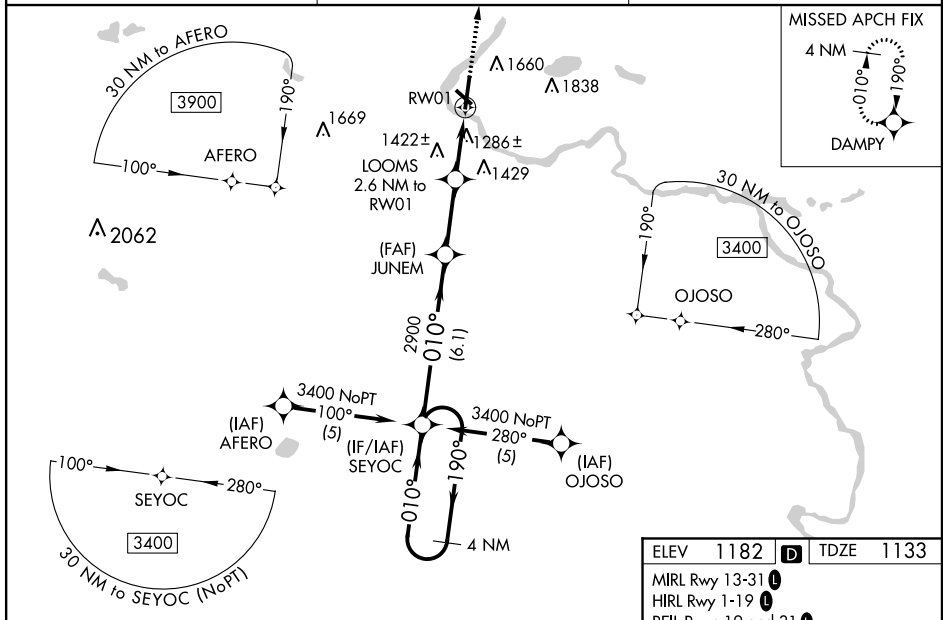
FORD (IMT)

⚠ Inoperative table does not apply to LPV. For uncompensated Baro-VNAV systems, LNAV/VNAV NA below -17°C (2°F) or above 54°C (130°F). Circling NA NE of Rwy 19 and 31. DME/DME RNP-0.3 NA. When local altimeter setting not received, use Escanaba altimeter setting and increase all DA/MDA 180 feet, increase LPV all Cats visibility 1/4 SM, LNAV/VNAV all Cats visibility 3/4 SM, LNAV Cat C/D visibility 1/2 SM, and Circling Cat B visibility 1/4 SM, Cat C/D visibility 3/4 SM. For inoperative MALSR increase visibility LNAV Cat A and B 1/4 mile. For Inoperative MALSR when using Escanaba altimeter setting, increase LPV all Cats visibility to 1 1/2 mile, LNAV Cat A visibility to 1 mile. Baro-VNAV and VDP NA when using Escanaba altimeter setting. Circling to Rwy 31 NA at night. Helicopter visibility reduction below 3/4 SM NA.

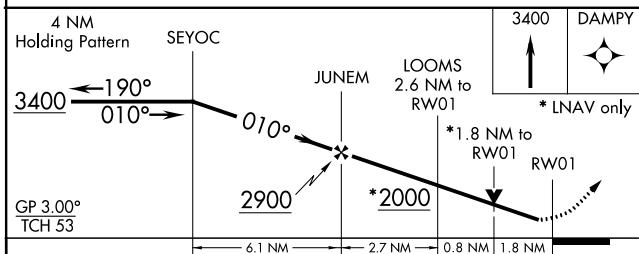


MISSED APPROACH:
Climb to 3400 direct DAMPY and hold.

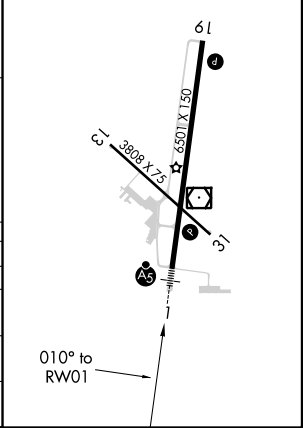
ASOS 119,025	MINNEAPOLIS CENTER 121.25 322.5	UNICOM 122.8 (CTAF)
------------------------	---	-------------------------------



ELEV 1182	TDZE 1133
MIRL Rwy 13-31	
HIRL Rwy 1-19	
REIL Rwys 19 and 31	



CATEGORY	A	B	C	D
LPV DA	1383-3/4 250 (300-3/4)			
LNAV/VNAV DA	1806-2 673 (700-2)			
LNAV MDA	1760-3/4	627 (600-3/4)	1760-1 1/4	1760-1 1/2
			627 (600-1 1/4)	627 (600-1 1/2)
C CIRCLING	1760-1	1780-1	1780-1 3/4	1840-2
	578 (600-1)	598 (600-1)	598 (600-1 3/4)	658 (700-2)



EC-1, 02 DEC 2021 to 30 DEC 2021

EC-1, 02 DEC 2021 to 30 DEC 2021