

WAAS CH 50239 W01A	APP CRS 012°	Rwy Idg TDZE Apt Elev	4651 844 848
--	------------------------	-----------------------------	---

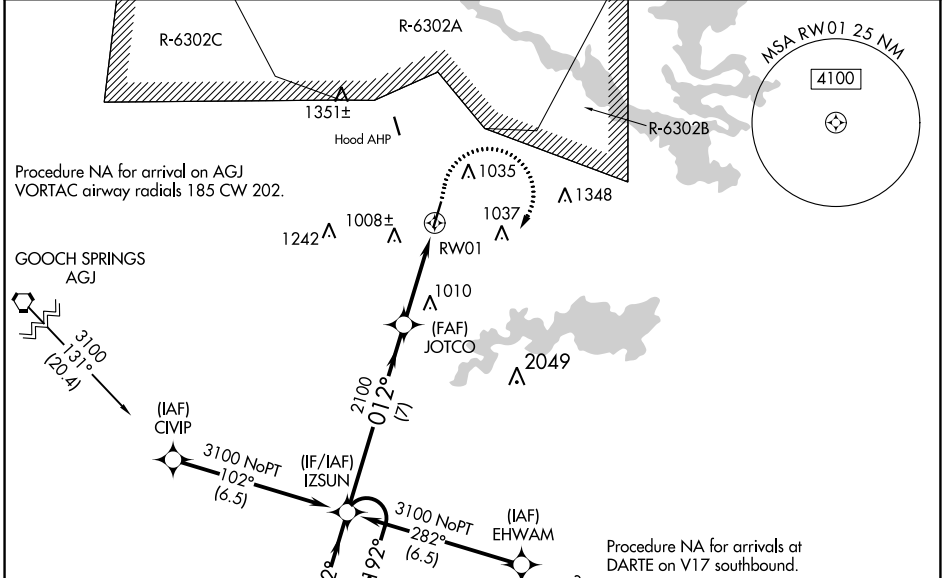
RNAV (GPS) RWY 1

SKYLARK FLD (I.L.E.)

▼
For uncompensated Baro-VNAV systems, LNAV/VNAV NA below -16°C (4°F) or above 54°C (130°F). DME/DME RNP-0.3 NA. Circling Rwy 19 NA at night.

MISSED APPROACH: Climb to 1300 then Climbing right turn to 3100 direct IZSUN and hold.

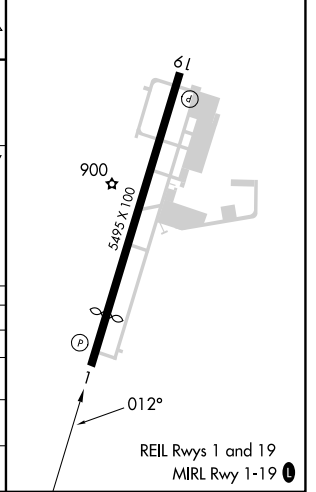
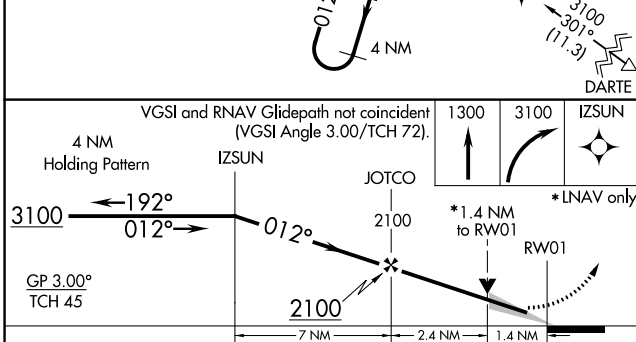
AWOS-3PT 128.575	GRAY APP CON 120.075 323.15	CLNC DEL 121.7	UNICOM 122.7 (CTAF)
----------------------------	---------------------------------------	--------------------------	-------------------------------



SC-3, 03 OCT 2024 to 31 OCT 2024

SC-3, 03 OCT 2024 to 31 OCT 2024

ELEV 848		TDZE 844
-----------------	--	-----------------



CATEGORY	A	B	C	D
LPV DA	1044-3/4		200 (200-3/4)	NA
LNAV/VNAV DA	1608-3		764 (800-3)	NA
LNAV MDA	1360-1	516 (600-1)	1360-1 3/8 516 (600-1 3/8)	NA
CIRCLING	1360-1	512 (500-1)	1440-1 1/2 592 (600-1 1/2)	NA