

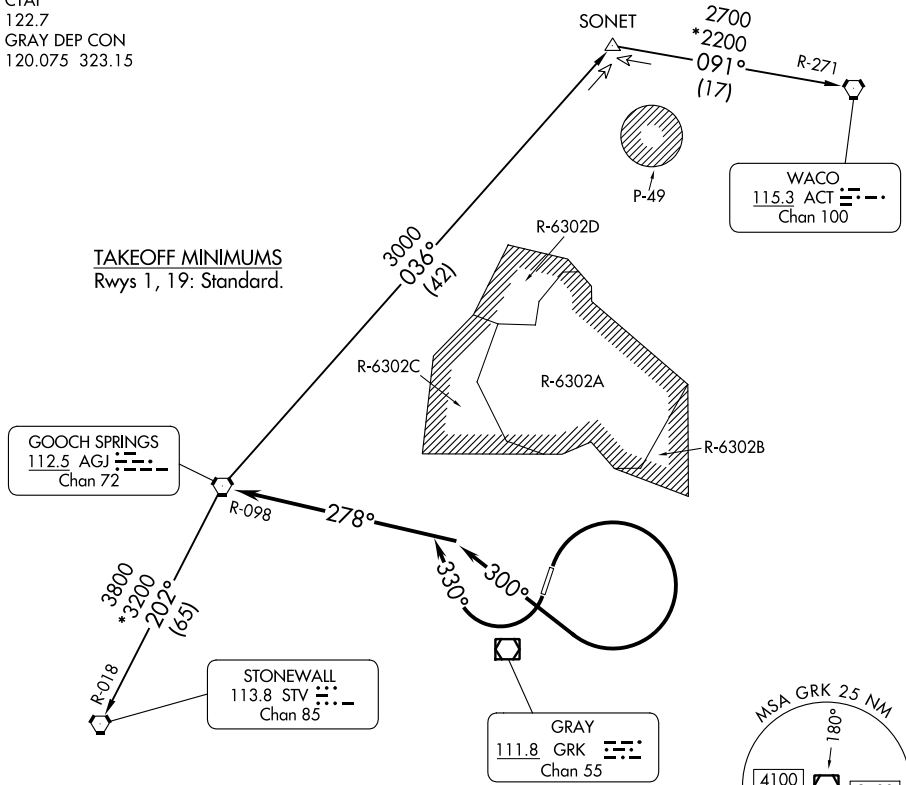
LAMPS EIGHT DEPARTURE

AWOS-3PT
128.575
CLNC DEL
121.7
CTAF
122.7
GRAY DEP CON
120.075 323.15

RADAR required.

**TOP ALTITUDE:
ASSIGNED BY ATC**

TAKEOFF MINIMUMS
Rwys 1, 19: Standard.



NOTE: WACO TRANSITION for aircraft inbound to terminal area airports.

NOTE: Chart not to scale.

DEPARTURE ROUTE DESCRIPTION

TAKEOFF RUNWAY 1: Climbing right turn heading 300° (to assigned altitude) to intercept and proceed on AGJ R-098. Thence. . .

TAKEOFF RUNWAY 19: Climbing right turn heading 330° (to assigned altitude) to intercept and proceed on AGJ R-098. Thence. . .

. . . on (transition) or (assigned route). Maintain ATC assigned altitude.

STONEWALL TRANSITION (LAMPS8.STV): From over AGJ VORTAC on AGJ R-202 and STV R-018 to STV VORTAC.

WACO TRANSITION (LAMPS8.ACT): From over AGJ VORTAC on AGJ R-036 to SONET INT, then on ACT R-271 to ACT VORTAC.

LAMPS EIGHT DEPARTURE

(LAMPS8.AGJ) 30NOV23