

LOC/DME I-FJD 110.55 Chan 42 (Y)	APP CRS 097°	Rwy ldg 6492 TDZE 23 Apt Elev 23
--	------------------------	---

ILS or LOC RWY 10R

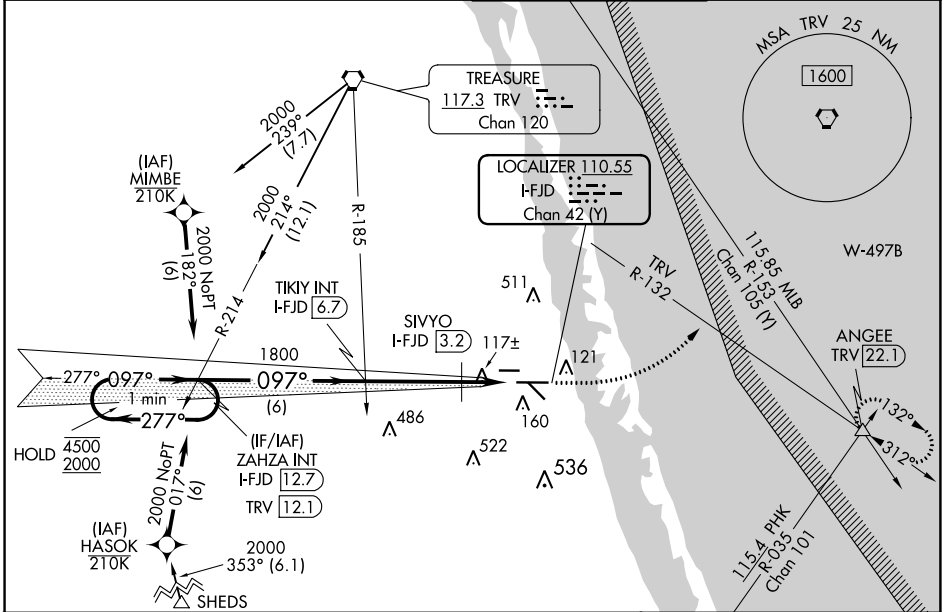
TREASURE COAST INTL (FPR)

RNAV 1-GPS or DME required for procedure entry.

Autopilot coupled approach NA below 720 MSL.

MISSED APPROACH: Climb to 1000 then climbing left turn to 2000 on heading 080° and TRV VORTAC R-132 to ANGEE INT/TRV 22.1 DME and hold.

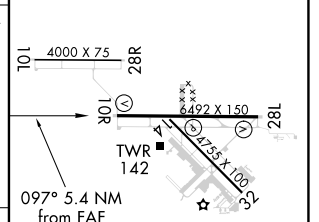
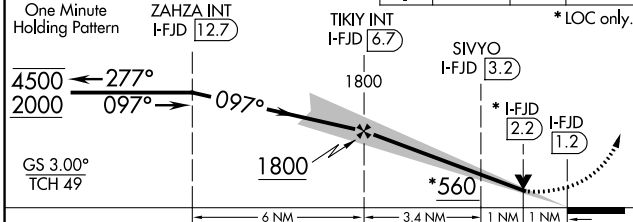
ATIS 134.825	PALM BEACH APP CON 132.8	FORT PIERCE TOWER * 128.2 (CTAF)	GND CON (GCO) 119.55
------------------------	------------------------------------	--	--------------------------------



SE-3, 05 SEP 2024 to 03 OCT 2024

SE-3, 05 SEP 2024 to 03 OCT 2024

VGSI and ILS glidepath not coincident (VGSI Angle 3.00/TCH 52).	1000	2000	ANGEE	ELEV 23	TDZE 23
---	------	------	-------	---------	---------



CATEGORY	A	B	C	D
S-ILS 10R	273-3/4 250 (300-3/4)			
S-LOC 10R	560-1	537 (600-1)	560-1 1/2	537 (600-1 1/2)
CIRCLING	560-1	537 (600-1)	880-2 1/2 857 (900-2 1/2)	880-2 3/4 857 (900-2 3/4)
SIVYO FIX MINIMUMS (DME REQUIRED)				
S-LOC 10R	380-1	357 (400-1)		
CIRCLING	460-1 437 (500-1)	480-1 457 (500-1)	880-2 1/2 857 (900-2 1/2)	880-2 3/4 857 (900-2 3/4)

REIL Rwy 10R and 28L	MRL all Rwy 1
FAF to MAP 5.4 NM	
Knots	60 90 120 150 180
Min:Sec	5:24 3:36 2:42 2:10 1:48