

APP CRS	Rwy Idg	<b>5002</b>
<b>171°</b>	TDZE	<b>1484</b>
	Apt Elev	<b>1488</b>

# RNAV (GPS) RWY 17

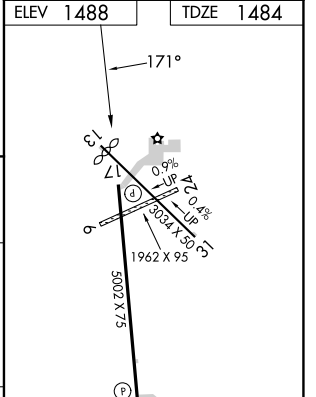
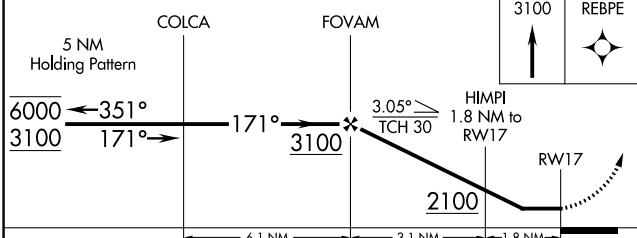
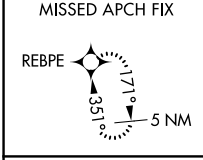
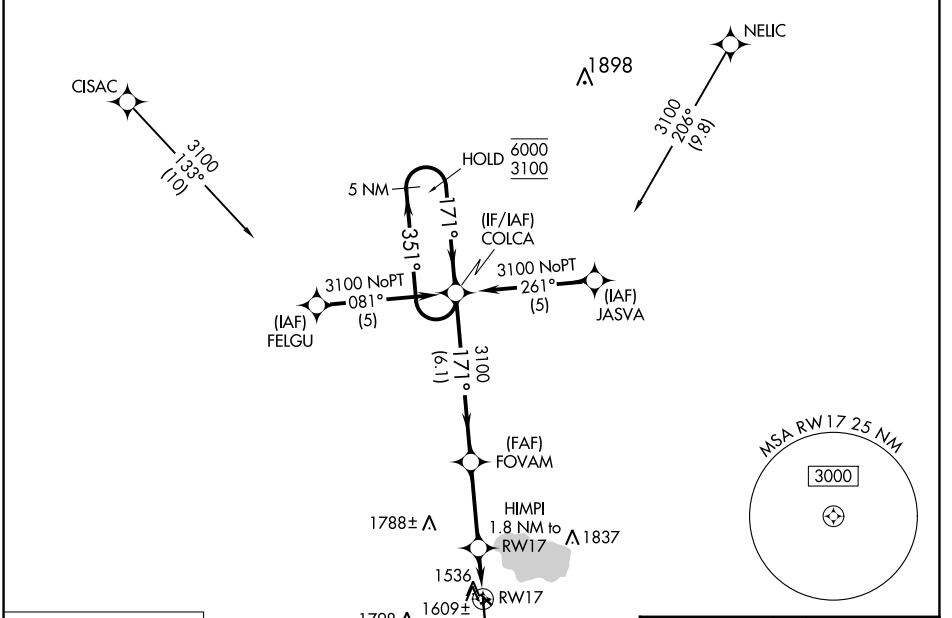
STORM LAKE MUNI (SLB)

RNP APCH - GPS.

⚠ Circling NA to Rwys 6 and 24. Rwy 17 helicopter visibility reduction below 1 SM NA. Straight-in Rwy 17 NA at night, Circling Rwy 13, 17 NA at night.

MISSED APPROACH: Climb to 3100 direct REBPE and hold.

AWOS-3 <b>118.525</b>	MINNEAPOLIS CENTER <b>134.0 288.3</b>	UNICOM <b>122.7 (CTAF) 0</b>
--------------------------	--	---------------------------------



CATEGORY	A	B	C	D
LNVA MDA	1860-1	376 (400-1)	NA	
CIRCLING	1920-1 432 (500-1)	1940-1 452 (500-1)	NA	

REIL Rwys 17 and 35 0  
MIRL Rwys 13-31 and 17-35 0

NC-3, 31 OCT 2024 to 28 NOV 2024

NC-3, 31 OCT 2024 to 28 NOV 2024