

WAAS CH <b>86211</b> <b>W23A</b>	APP CRS <b>232°</b>	Rwy Idg <b>6001</b> TDZE <b>723</b> Apt Elev <b>727</b>
--	------------------------	---

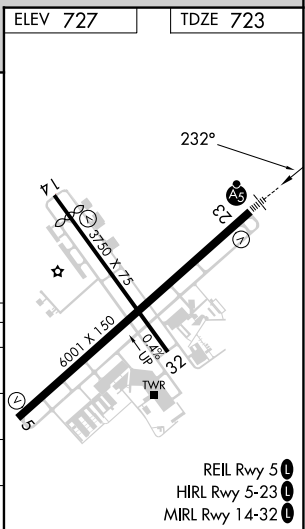
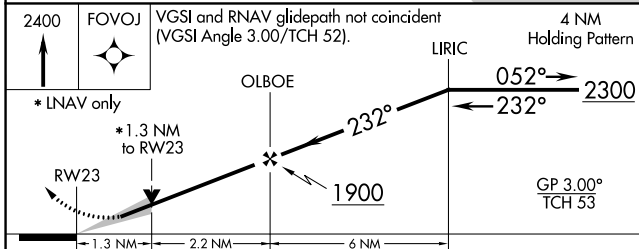
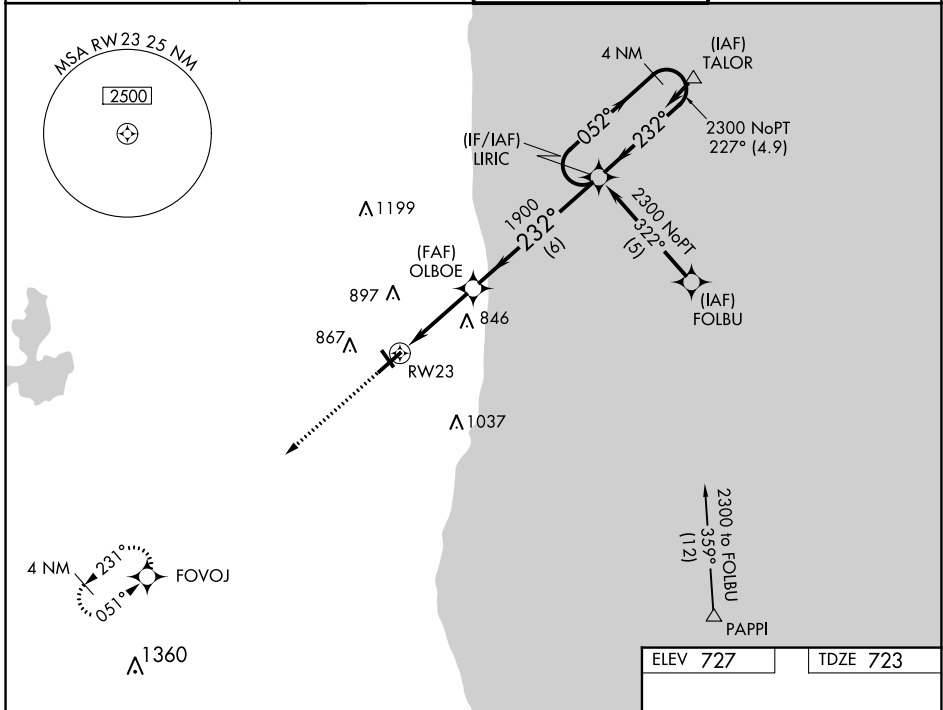
# RNAV (GPS) RWY 23

WAUKEGAN NTL (UGN)

**⚠** Circling to Rwy 14, 32 NA at night. For uncompensated Baro-VNAV systems, LNAV/VNAV NA below -16° C (4° F) or above 54° C (130° F). DME/DME RNP-0.3 NA. For inoperative ALS, increase LNAV/VNAV all Cats visibility to 3/8 SM.

**MALSR**  
**AS**  
MISSED APPROACH: Climb to 2400 direct FOVOJ and hold.

ATIS <b>132.4</b>	CHICAGO APP CON <b>120.55</b>	WAUKEGAN TOWER ★ <b>120.05 (CTAF) 0 273.55</b>	GND CON <b>121.65</b>
----------------------	----------------------------------	---	--------------------------



CATEGORY	A	B	C	D
LPV DA	980-1/2 257 (300-1/2)			
LNAV/VNAV DA	1020-1/2 297 (300-1/2)		1020-3/4 297 (300-3/4)	
LNAV MDA	1160-1/2 437 (500-1/2)		1160-3/4 437 (500-3/4)	
<b>C</b> CIRCLING	1220-1 493 (500-1)		1400-2 1/4 673 (700-2 1/4)	

EC-3, 08 AUG 2024 to 05 SEP 2024

EC-3, 08 AUG 2024 to 05 SEP 2024