

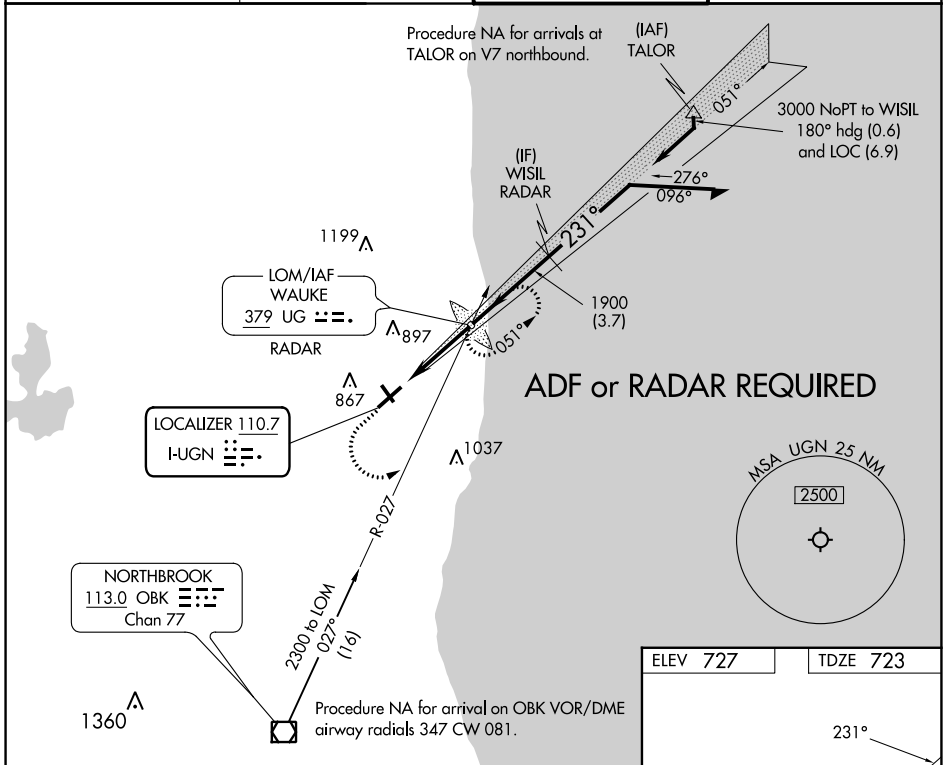
LOC I-UGN <b>110.7</b>	APP CRS <b>231°</b>	Rwy Idg TDZE Apt Elev <b>6001</b> <b>723</b> <b>727</b>
---------------------------	------------------------	--

# ILS or LOC RWY 23

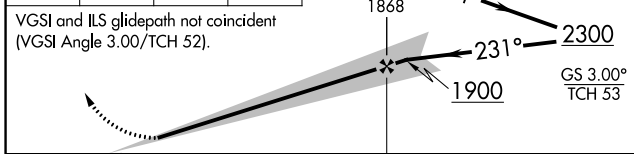
WAUKEGAN NTL (UGN)

<p>Circling to Rwy 14, 32 NA at night. ADF or RADAR required.</p>	<p>MALS</p>	<p>MISSED APPROACH: Climb to 1600 then climbing left turn to 2300 to intercept OBK VOR/DME R-027 to WAUKE LOM/RADAR and hold.</p>
---	-------------	---

ATIS <b>132.4</b>	CHICAGO APP CON <b>120.55</b>	WAUKEGAN TOWER ★ <b>120.05</b> (CTAF) <b>273.55</b>	GND CON <b>121.65</b>
----------------------	----------------------------------	--	--------------------------



1600	2300	OBK R-027	UG	WAUKE LOM/RADAR	Remain within 10 NM
------	------	-----------	----	-----------------	---------------------



	3.4 NM			
CATEGORY	A	B	C	D
S-ILS 23		923-1/2	200 (200-1/2)	
S-LOC 23		1040-1/2	317 (400-1/2)	
CIRCLING	1220-1	493 (500-1)	1220-1 1/2 493 (500-1/2)	1400-2 1/4 673 (700-2 1/4)

ELEV 727	TDZE 723
----------	----------

REIL Rwy 5   
HIRL Rwy 5-23   
MIRL Rwy 14-32

FAF to MAP 3.4 NM					
Knots	60	90	120	150	180
Min:Sec	3:24	2:16	1:42	1:21	1:08

EC-3, 03 OCT 2024 to 31 OCT 2024

EC-3, 03 OCT 2024 to 31 OCT 2024