

VOR/DME CCR 117.0 Chan 117	APP CRS 172°	Rwy Idg TDZE 22 Apt Elev 26	4400
---	------------------------	---	-------------

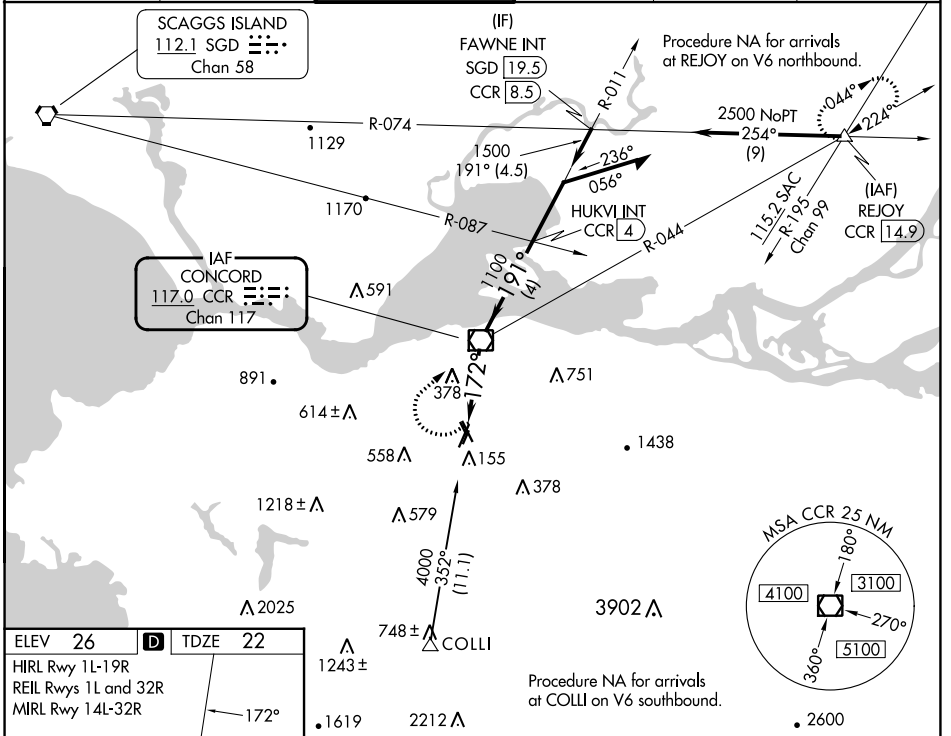
VOR RWY 19R

BUCHANAN FLD (CCR)

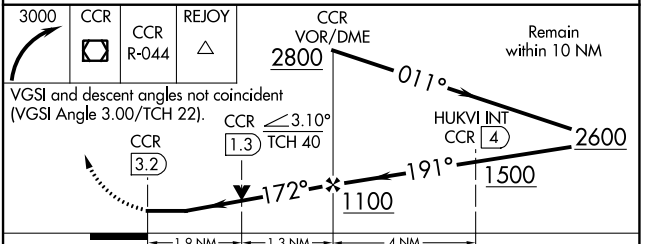
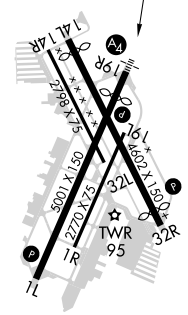
⚠ Inop table does not apply. Circling NA west of Rwy 1L-19R. Circling Rwy 1L, 1R, 19L, 32L, 32R NA at night. Rwy 19R helicopter visibility reduction below 3/4 SM NA. DME required.

MALS MISSED APPROACH: Climbing right turn to 3000 direct CCR VOR/DME then on CCR VOR/DME R-044 to REJOY/CCR 14.9 DME and hold. * Missed approach requires minimum climb of 320 feet per NM to 1700.

ATIS 124.7	TRAVIS APP CON 119.9 322.325	CONCORD TOWER ★ 119.7 (CTAF) 257.8	GND CON 121.9	CLNC DEL 118.75	UNICOM 122.95
----------------------	--	--	-------------------------	---------------------------	-------------------------



ELEV 26	D	TDZE 22
HIRL Rwy 1L-19R REIL Rwy 1L and 32R MIRL Rwy 14L-32R		



CATEGORY	A	B	C	D
S-19R*	640-1	618 (700-1)	640-1 3/4	618 (700-1 3/4)
S-19R	1020-1 1/4 998 (1000-1 1/4)	1020-1 1/2 998 (1000-1 1/2)	1020-3	998 (1000-3)
C CIRCLING	1020-1 1/4 994 (1000-1 1/4)	1020-1 1/2 994 (1000-1 1/2)	1020-3 994 (1000-3)	NA

SW-2, 31 OCT 2024 to 28 NOV 2024

SW-2, 31 OCT 2024 to 28 NOV 2024