

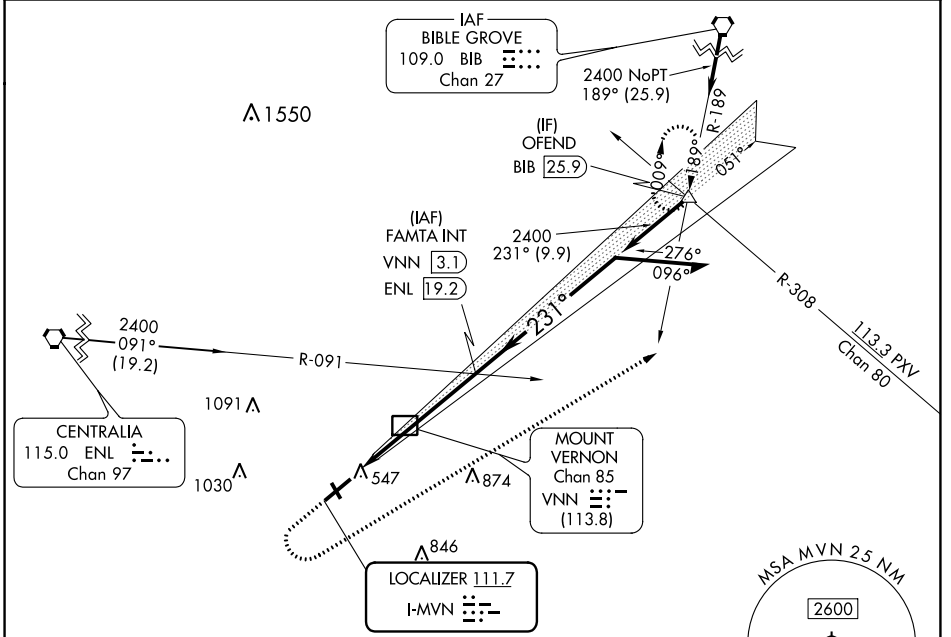
LOC I-MVN 111.7	APP CRS 231°	Rwy Idg TDZE Apt Elev	5572 471 480
---------------------------	------------------------	-----------------------------	---

ILS or LOC RWY 23

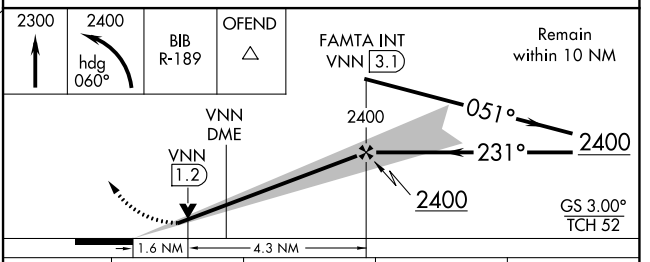
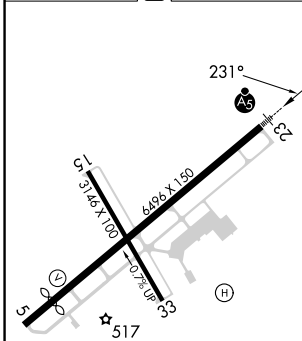
MOUNT VERNON (MVN)

<p>⚠ Circling Rwy 15, 33 NA at night.</p>	<p>MALSR</p>	<p>MISSED APPROACH: Climb to 2300 then climbing left turn to 2400 on heading 060° and on BIB VORTAC R-189 to OFEND and hold.</p>
--	---------------------	---

AWOS-3PT 118.2	KANSAS CITY CENTER 127.7 351.825	UNICOM 123.0 (CTAF) 0
--------------------------	--	---------------------------------



ELEV 480	D	TDZE 471
----------	----------	----------



CATEGORY	A	B	C	D
S-ILS 23	671-1/2 200 (200-1/2)			
S-LOC 23	1020-1/2	549 (600-1/2)	1020-1 1/8	549 (600-1 1/8)
C CIRCLING	1020-1	540 (600-1)	1140-1 3/4	1380-3
			660 (700-1 3/4)	900 (1000-3)

MOUNT VERNON, ILLINOIS
Amdt 12A 19MAY22

38°19'N-88°52'W

MOUNT VERNON (MVN)

ILS or LOC RWY 23

EC-3, 31 OCT 2024 to 28 NOV 2024

EC-3, 31 OCT 2024 to 28 NOV 2024