

APP CRS	Rwy Idg	<b>5300</b>
<b>302°</b>	TDZE	<b>408</b>
	Apt Elev	<b>413</b>

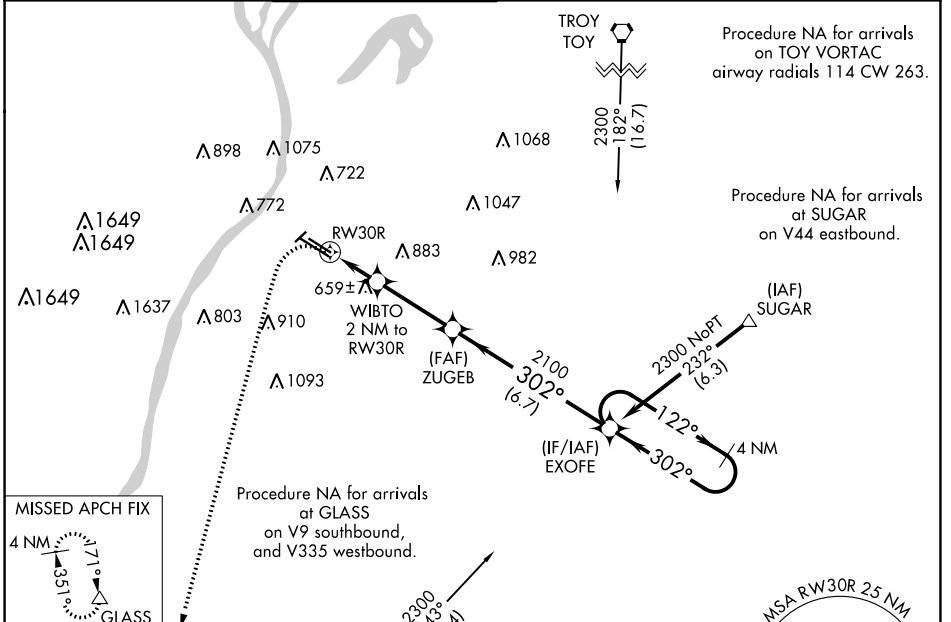
# RNAV (GPS) RWY 30R

## ST LOUIS DOWNTOWN (CPS)

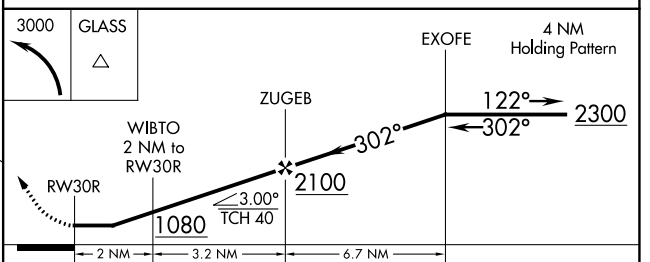
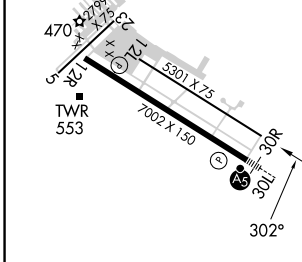
**▼** Circling Rwy 5 NA at night. DME/DME RNP-0.3 NA. Rwy 30R helicopter visibility reduction below ¼ SM NA. When local altimeter setting not received, use St Louis Lambert Intl altimeter setting and increase all MDA 80 feet, increase LNAV Cats C/D visibility ½ SM and Circling Cat C visibility ¼ SM.

**▲** MISSED APPROACH: Climbing left turn to 3000 direct GLASS and hold.

ATIS <b>121.45</b>	ST LOUIS APP CON <b>123.7 371.875</b>	DOWNTOWN TOWER ★ <b>119.925 (CTAF) 0 379.3</b>	GND CON <b>121.8</b>	CLNC DEL <b>118.275</b>	CLNC DEL <b>121.8</b> (When twr closed)	UNICOM <b>122.95</b>
-----------------------	--	---	-------------------------	----------------------------	---	-------------------------



ELEV	<b>413</b>	<b>D</b>	TDZE	<b>408</b>
------	------------	----------	------	------------



CATEGORY	A	B	C	D
LNAV MDA	920-1	512 (600-1)	920-1½	512 (600-1½)
CIRCLING	920-1 507 (600-1)	1120-1 707 (800-1)	1240-2½ 827 (900-2½)	1380-3 967 (1000-3)

HIRL Rwy 12R-30L  
REIL Rwys 12L and 12R  
REIL Rwy 30R  
MIRL Rwys 5-23 and 12L-30R

EC-3, 03 OCT 2024 to 31 OCT 2024

EC-3, 03 OCT 2024 to 31 OCT 2024