

# GATEWAY ONE DEPARTURE

AL-5316 (FAA)

ST LOUIS DOWNTOWN (CPS)  
CAHOKIA/ST. LOUIS, ILLINOIS

EC-3, 03 OCT 2024 to 31 OCT 2024

## TOP ALTITUDE: ASSIGNED BY ATC

### TAKEOFF MINIMUMS

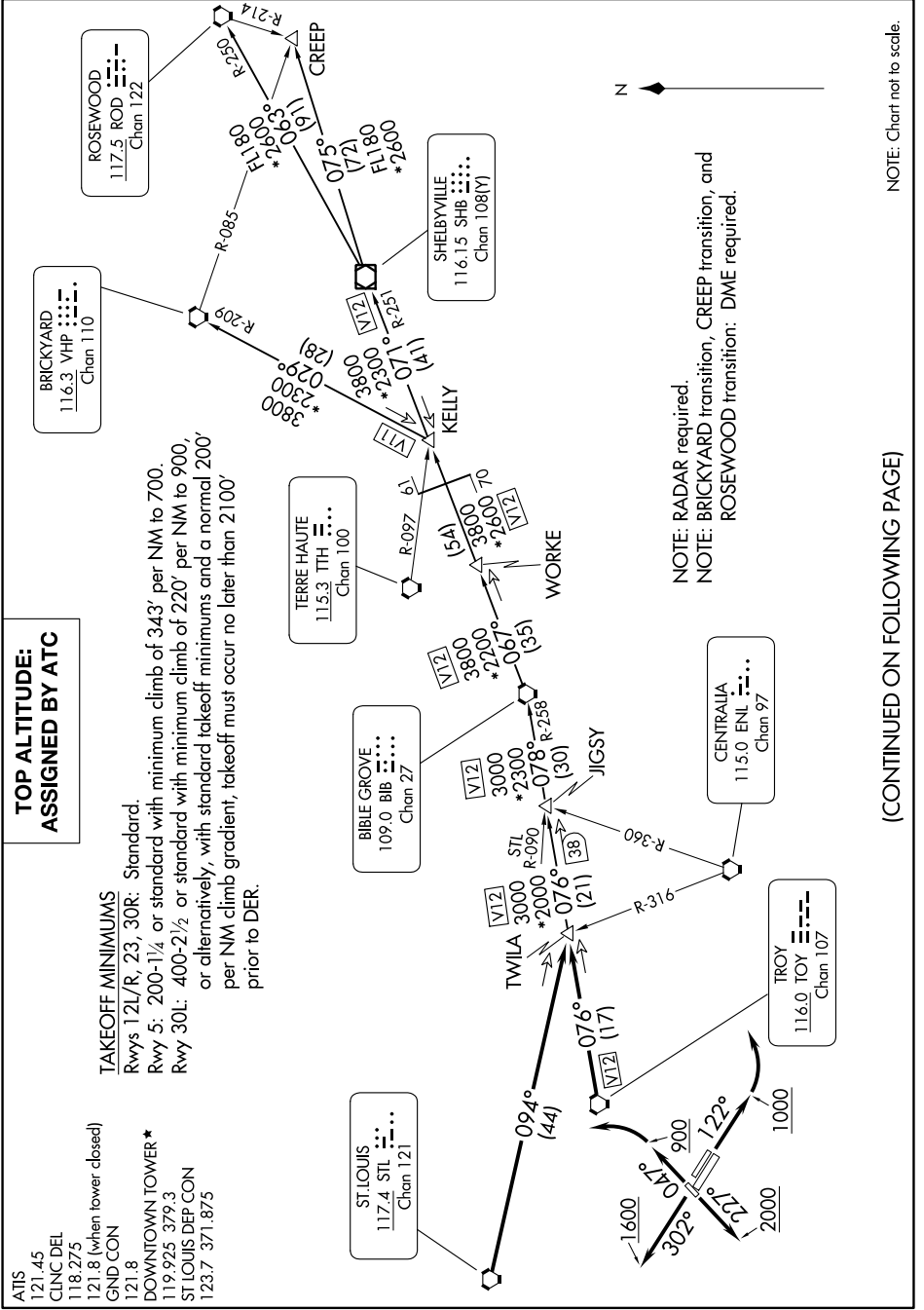
Rwys 12L/R, 23, 30R: Standard.  
 Rwy 5: 200-1/4 or standard with minimum climb of 343' per NM to 700.  
 Rwy 30L: 400-2 1/2 or standard with minimum climb of 220' per NM to 900,  
 or alternatively, with standard takeoff minimums and a normal 200'  
 per NM climb gradient, takeoff must occur no later than 2100'  
 prior to DER.

ATIS 121.45  
 CLNC DEL 118.275  
 121.8 (when tower closed)  
 GND CON 121.8  
 DOWNTOWN TOWER \* 119.925 379.3  
 ST LOUIS DEP CON 123.7 371.875

# GATEWAY ONE DEPARTURE

(GATWY1.TWILA) 08NOV18

CAHOKIA/ST. LOUIS, ILLINOIS  
ST LOUIS DOWNTOWN (CPS)



(CONTINUED ON FOLLOWING PAGE)

EC-3, 03 OCT 2024 to 31 OCT 2024