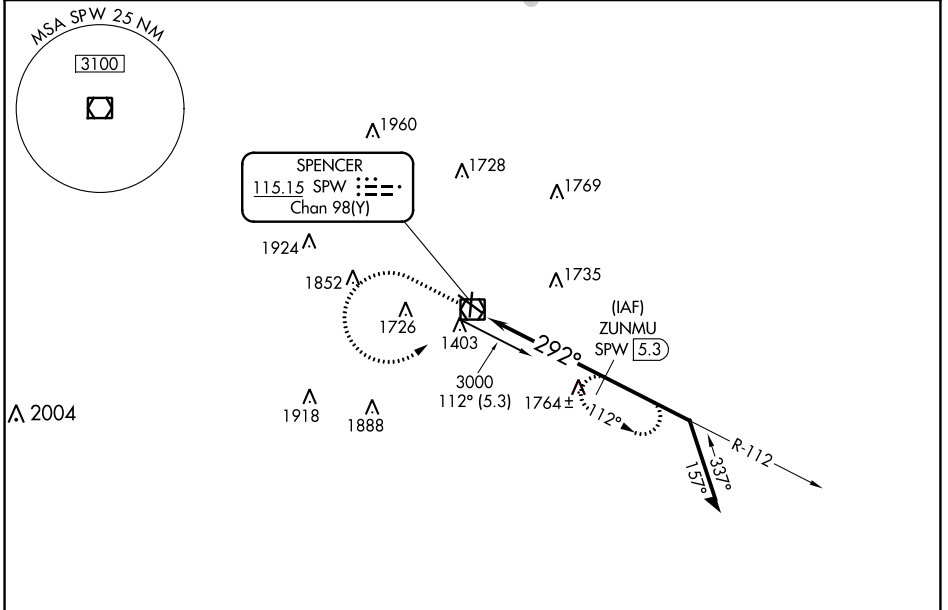


VOR/DME SPW <b>115.15</b> Chan <b>98(Y)</b>	APP CRS <b>292°</b>	Rwy Idg TDZE Apt Elev	<b>5511</b> <b>1338</b> <b>1339</b>
---	------------------------	-----------------------------	---

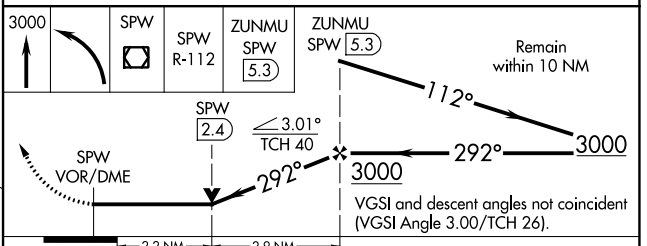
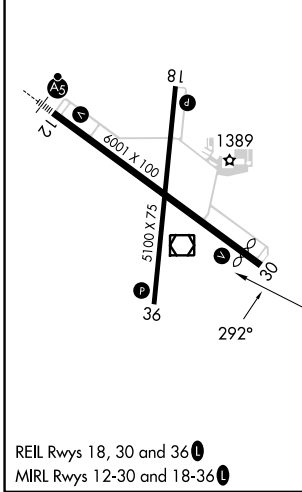
# VOR RWY 30

SPENCER MUNI (SPW)

DME required.		MISSED APPROACH: Climb to 3000, then left turn direct SPW VOR/DME, then on SPW VOR/DME R-112 to ZUNMU/SPW 5.3 DME and hold.
<p>⚠ VDP NA when using Estherville altimeter setting.</p> <p>⚠ When local altimeter setting not received, use Estherville altimeter setting and increase all MDA 60 feet and increase S-30 Cat C/D visibility ½ SM and Circling Cat C/D visibility ¼ SM.</p>		
ASOS <b>126.625</b>	MINNEAPOLIS CENTER <b>127.75 257.7</b>	UNICOM <b>123.0 (CTAF) 0</b>



ELEV 1339	TDZE 1338
-----------	-----------



CATEGORY	A	B	C	D
S-30	2080-1 742 (800-1)	2080-1¼ 742 (800-1¼)	2080-2	742 (800-2)
<b>C</b> CIRCLING	2080-1 741 (800-1)	2080-1¼ 741 (800-1¼)	2100-2¼ 761 (800-2¼)	2100-2½ 761 (800-2½)

NC-3, 31 OCT 2024 to 28 NOV 2024

NC-3, 31 OCT 2024 to 28 NOV 2024