

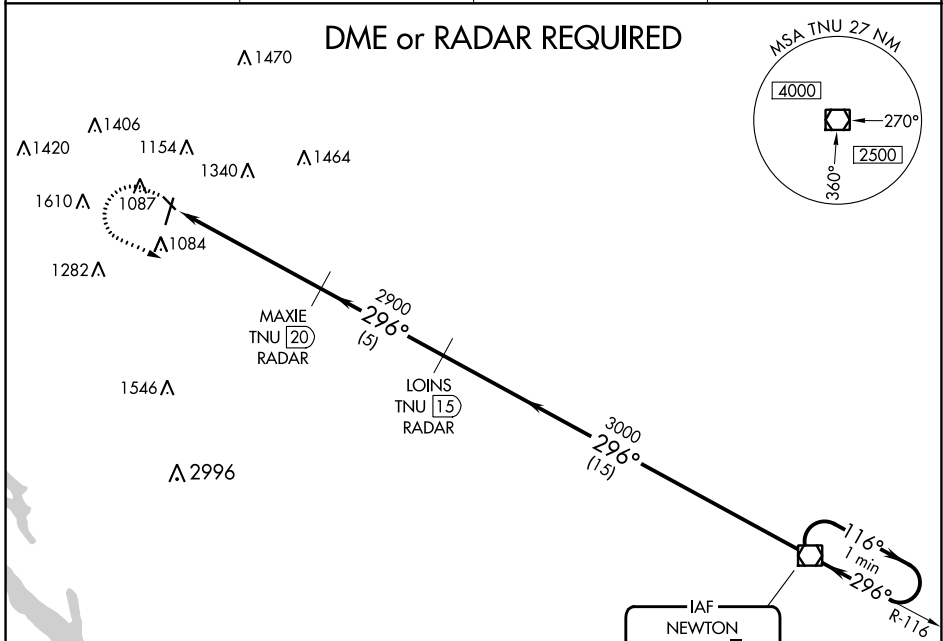
VOR/DME TNU 112.5 Chan 72	APP CRS 296°	Rwy Idg TDZE 930 Apt Elev 956
---	------------------------	---

VOR RWY 31

AMES MUNI (AMW)

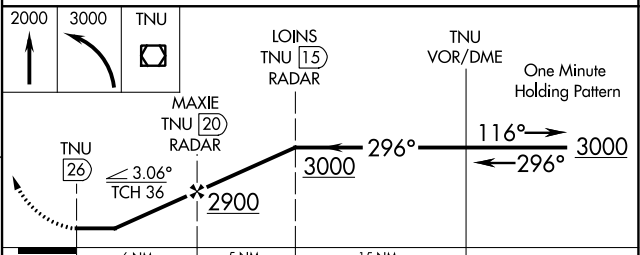
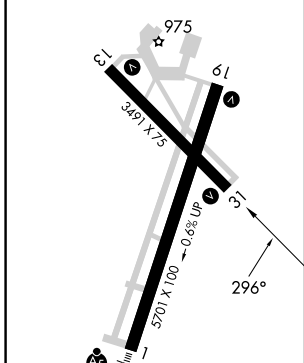
<p>▼ Rwy 31 helicopter visibility reduction below 1 SM NA. ☁ -27°C Straight-in and Circling Rwy 31 NA at night.</p>	<p>MISSED APPROACH: Climb to 2000, then climbing left turn to 3000 direct TNU VOR/DME and hold.</p>
--	---

ASOS 132.025	DES MOINES APP CON 123.9 307.15	CLNC DEL 126.0	UNICOM 122.7 (CTAF) 0
------------------------	---	--------------------------	---------------------------------



ELEV 956	TDZE 930
-----------------	-----------------

NoPT for arrivals on TNU VOR/DME
airway radials 031 CW 081.



CATEGORY	A	B	C	D
S-31	1580-1	650 (700-1)	1580-1 7/8 650 (700-1 7/8)	NA
CIRCLING	1580-1	624 (700-1)	1640-2 684 (700-2)	NA

NC-3, 03 OCT 2024 to 31 OCT 2024

NC-3, 03 OCT 2024 to 31 OCT 2024