

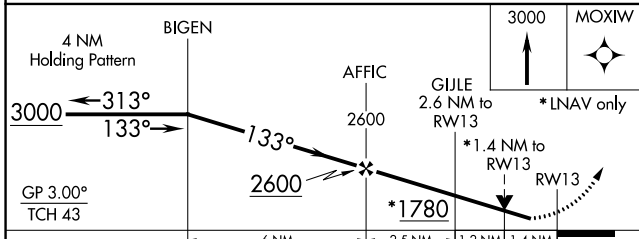
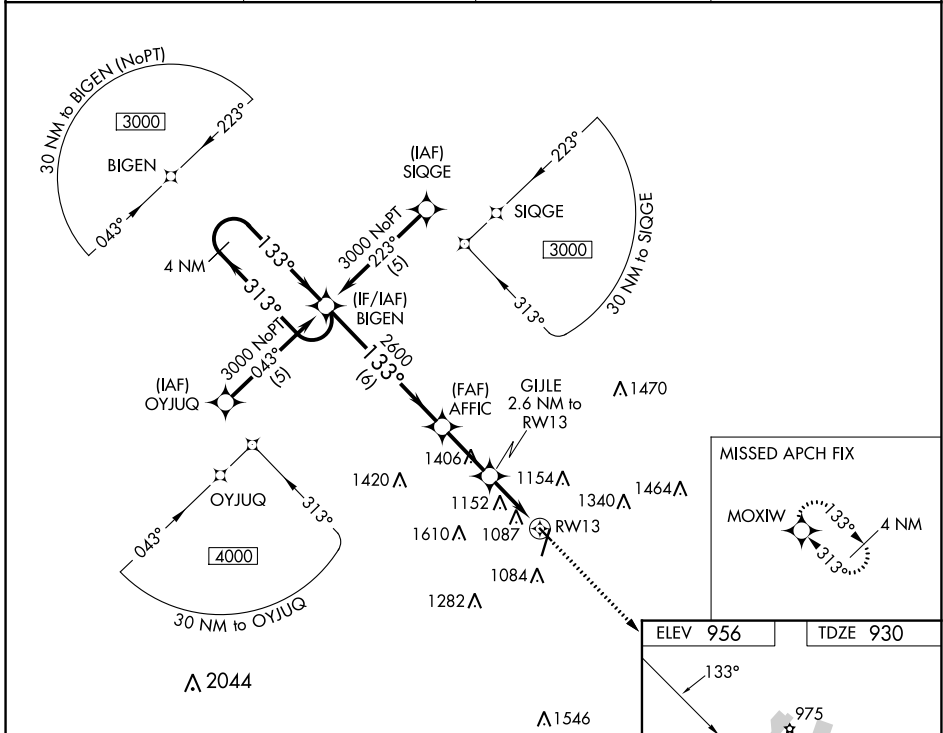
WAAS CH <b>63117</b> <b>W13A</b>	APP CRS <b>133°</b>	Rwy Idg TDZE Apt Elev	<b>3491</b> <b>930</b> <b>956</b>
--	------------------------	-----------------------------	---

# RNAV (GPS) RWY 13

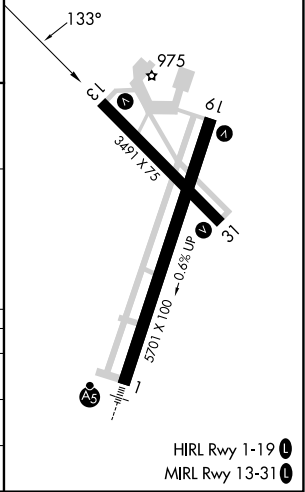
AMES MUNI (AMW)

RNP APCH.	<p>▼ For uncompensated Baro-VNAV systems, LNAV/VNAV NA below -16°C or above 54°C.                  ✱ -27°C Rwy 13 helicopter visibility reduction below ¾ SM NA.</p>	MISSED APPROACH: Climb to 3000 direct MOXIW and hold.
-----------	--	---

ASOS <b>132.025</b>	DES MOINES APP CON <b>123.9 307.15</b>	CLNC DEL <b>126.0</b>	UNICOM <b>122.7 (CTAF) 0</b>
------------------------	---	--------------------------	---------------------------------



ELEV 956	TDZE 930
----------	----------



CATEGORY	A	B	C	D
LPV DA	1224-1	294 (300-1)		NA
LNAV/VNAV DA	1478-2	548 (600-2)		NA
LNAV MDA	1420-1	490 (500-1)	1420-1¼ 490 (500-1¼)	NA

NC-3, 31 OCT 2024 to 28 NOV 2024

NC-3, 31 OCT 2024 to 28 NOV 2024