

VOR/DME DVL 114.75 Chan 94 (Y)	APP CRS 303°	Rwy Idg TDZE 1450 Apt Elev 1470
----------------------------------------------------	------------------------	-----------------------------------------------------

VOR RWY 31

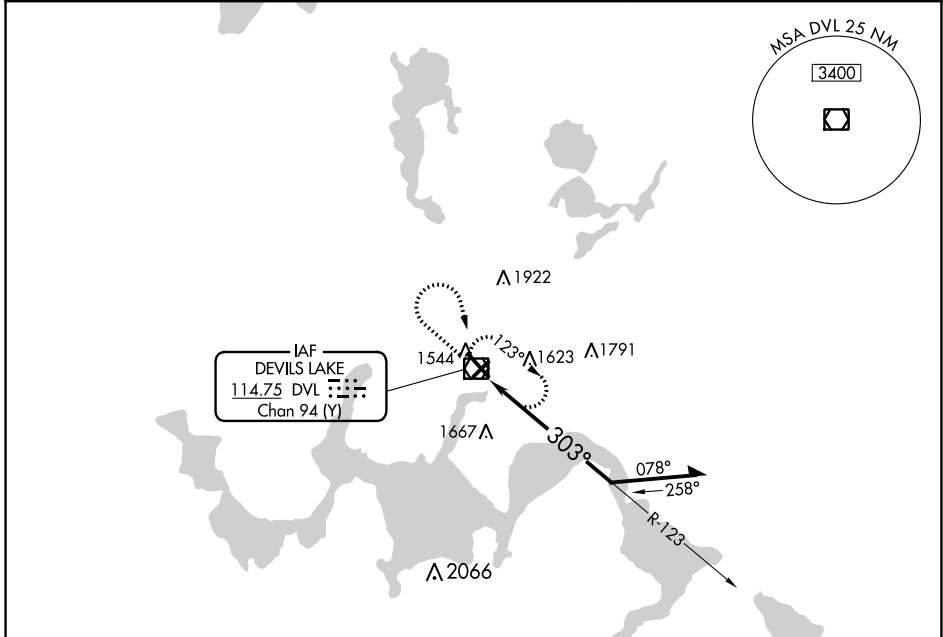
DEVILS LAKE RGNL (DVL)

⚠ When local altimeter setting not received, use Cando altimeter setting and increase all MDA 80 feet, increase S-31 Cats C and D visibility 1/8 mile, and Circling Cats C and D visibility 1/4 mile.

MALSRL

MISSED APPROACH: Climb to 3200 then right turn direct DVL VOR/DME and hold.

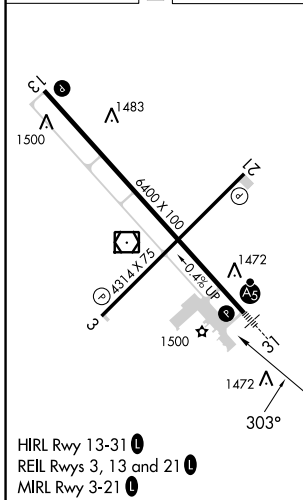
AWOS-3PT 125.875	MINNEAPOLIS CENTER 124.2 270.3	UNICOM 122.8 (CTAF) 0
----------------------------	------------------------------------------	---------------------------------



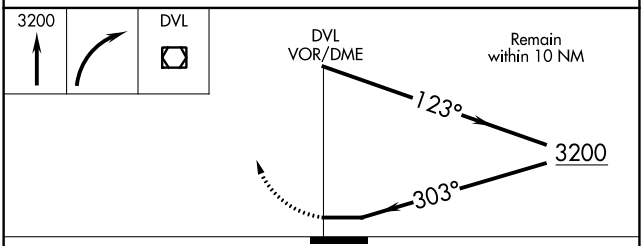
NC-1, 18 MAY 2023 to 15 JUN 2023

NC-1, 18 MAY 2023 to 15 JUN 2023

ELEV 1470	D	TDZE 1450
-----------	----------	-----------



HIRL Rwy 13-31 **0**
REIL Rwy 3, 13 and 21 **0**
MIRL Rwy 3-21 **0**



CATEGORY	A	B	C	D
S-31	2020-1/2 570 (600-1/2)		2020-1/4 570 (600-1/4)	
C CIRCLING	2020-1 550 (600-1)		2240-2 1/4 770 (800-2 1/4)	2240-2 1/2 770 (800-2 1/2)