

WAAS CH <b>93608</b> <b>W03A</b>	APP CRS <b>038°</b>	Rwy ldg TDZE Apt Elev	<b>4314</b> <b>1450</b> <b>1470</b>
--	------------------------	-----------------------------	---

# RNAV (GPS) RWY 3

DEVILS LAKE RGNL (DVL)

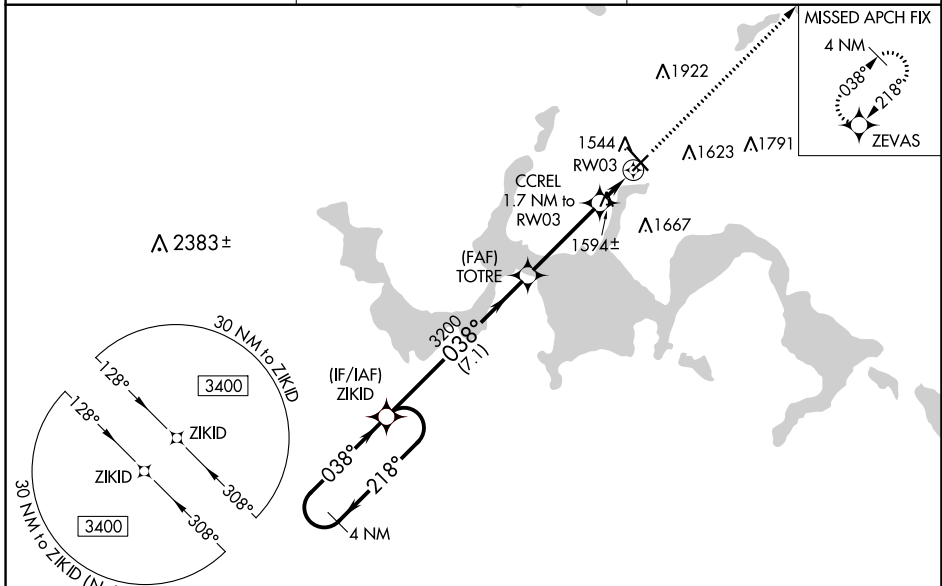
**⚠** For uncompensated Baro-VNAV systems, LNAV/VNAV NA below -17°C (2°F) or above 54°C (130°F). DME/DME RNP-0.3 NA. When local altimeter setting not received, use Cando altimeter setting and increase all DA 63 feet, and all MDA 80 feet, increase LNAV/VNAV all Cats visibility 1/8 mile, LNAV and Circling Cat C and D visibility 1/4 mile. Helicopter visibility reduction below 3/4 SM NA. Baro-VNAV NA when using Cando altimeter setting.

MISSED APPROACH: Climb to 3400 direct ZEVAS and hold.

AWOS-3PT  
**125.875**

MINNEAPOLIS CENTER  
**124.2 270.3**

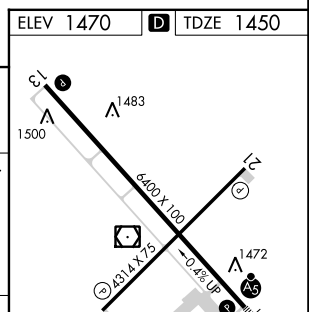
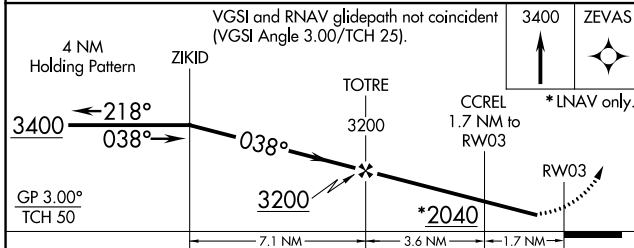
UNICOM  
**122.8 (CTAF)**



NC-1, 18 MAY 2023 to 15 JUN 2023

NC-1, 18 MAY 2023 to 15 JUN 2023

ELEV 1470 **D** TDZE 1450



CATEGORY	A	B	C	D
LPV DA	1700-1		250 (300-1)	
LNAV/VNAV DA	1714-1		264 (300-1)	
LNAV MDA	1860-1 410 (400-1)		1860-1 1/8 410 (400-1 1/8)	
<b>C</b> CIRCLING	2000-1 530 (600-1)		2240-2 1/4 770 (800-2 1/4) 2240-2 1/2 770 (800-2 1/2)	

HIRL Rwy 13-31 **Ⓛ**  
REIL Rwys 3, 13 and 21 **Ⓛ**  
MIRL Rwy 3-21 **Ⓛ**