

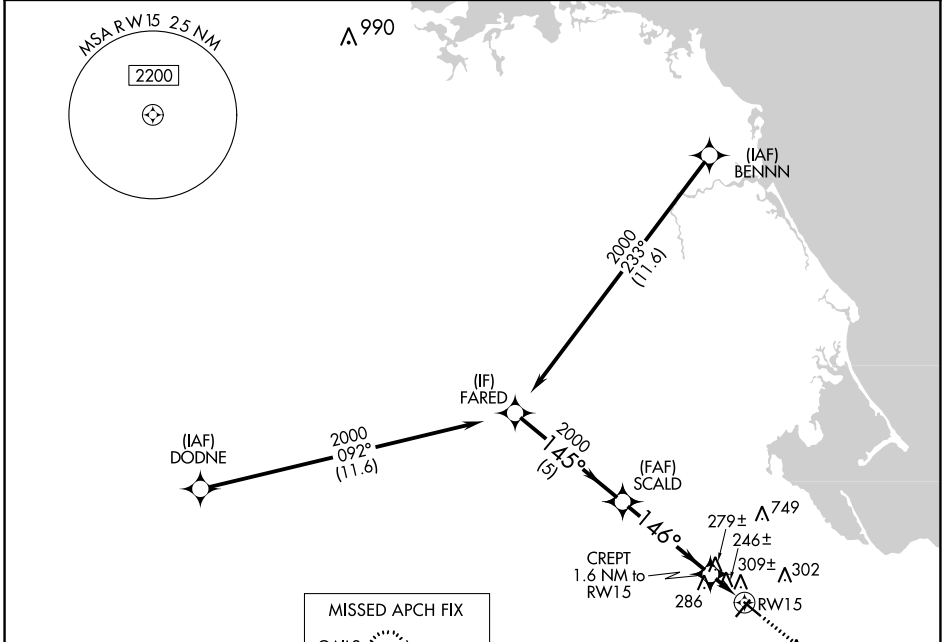
WAAS CH 93639	APP CRS 146°	Rwy Idg TDZE 147	4350
W15A		Apt Elev	148

RNAV (GPS) RWY 15

PLYMOUTH MUNI (PYM)

RNP APCH - GPS.	MISSED APPROACH: Climb to 600 then climbing left turn to 2000 direct GAILS and hold.
<p>▼ Rwy 15 helicopter visibility reduction below 1 SM NA.</p> <p>▲ Straight-in Rwy 15 NA at night, Circling Rwy 15 NA at night.</p>	

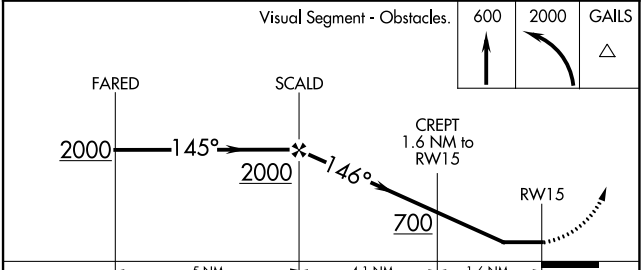
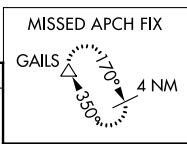
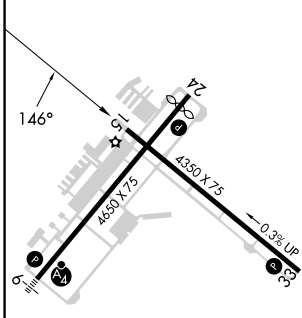
ASOS 135.625	BOSTON APP CON 118.2 284.6	CLNC DEL 127.75	UNICOM 122.725 (CTAF)	122.9
------------------------	--------------------------------------	---------------------------	---------------------------------	--------------



NE-1, 31 OCT 2024 to 28 NOV 2024

NE-1, 31 OCT 2024 to 28 NOV 2024

ELEV 148	TDZE 147
-----------------	-----------------



	5 NM		4.1 NM		1.6 NM		
CATEGORY	A	B	C	D			
LP MDA	500-1 353 (400-1)			NA			
LNAV MDA	560-1	413 (500-1)	560-1 ¹ / ₈	413 (500-1 ¹ / ₈)		NA	
CIRCLING	620-1	640-1	760-1 ³ / ₄	612 (700-1 ³ / ₄)		NA	
	472 (500-1)	492 (500-1)	612 (700-1 ³ / ₄)				