

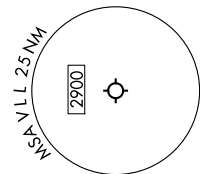
EC-1, 31 OCT 2024 to 28 NOV 2024

AWOS-3
119.475
CTAF
123.05
DETROIT DEP CON
132.35 284.0

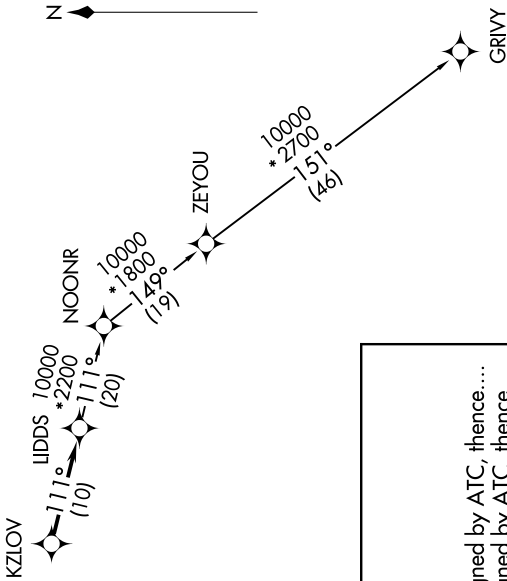
TAKEOFF MINIMUMS:
Rwy 10: Standard.
Rwy 28: Standard with minimum climb
of 476' per NM to 1500.

RNAV 1 - DME/DME/IRU or GPS.
RADAR required.

**TOP ALTITUDE:
ASSIGNED BY ATC**



NOTE: Turbopjet departures at/above 10000,
maintain 280K until advised by ATC.



DEPARTURE ROUTE DESCRIPTION

TAKEOFF RUNWAY 10: Climb on heading 096° to 1400 then as assigned by ATC, thence....
TAKEOFF RUNWAY 28: Climb on heading 276° to 1500 then as assigned by ATC, thence....

....for RADAR vectors to KZLOV, then on track 111° to LIDDS, then on (transition).
Maintain ATC assigned altitude, expect filed altitude 10 minutes after departure.

GRIVY TRANSITION (LIDDS3.GRIVY):

NOTE: Chart not to scale.

EC-1, 31 OCT 2024 to 28 NOV 2024