

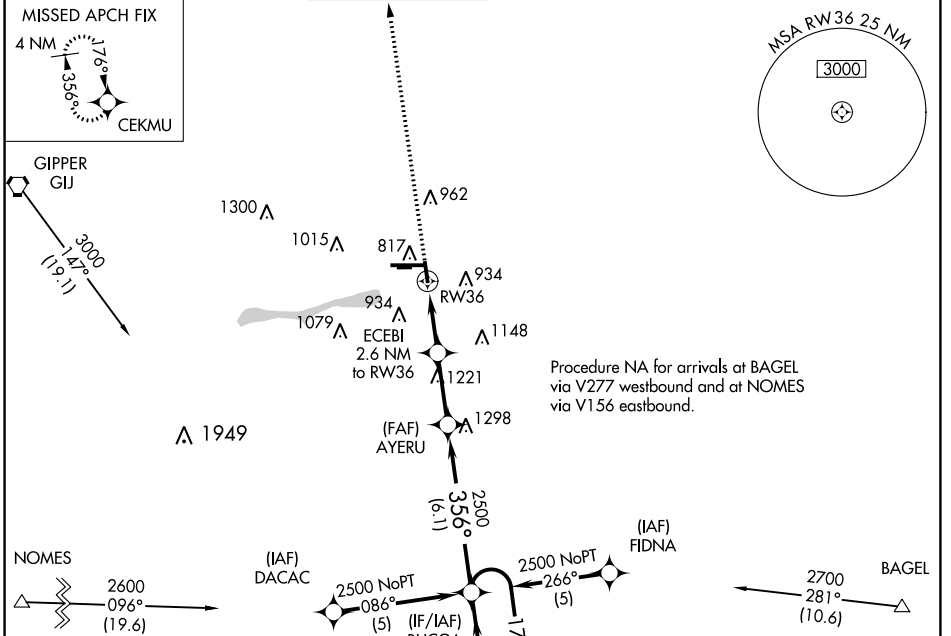
APP CRS	Rwy Idg	3999
356°	TDZE	776
	Apt Elev	778

RNAV (GPS) RWY 36

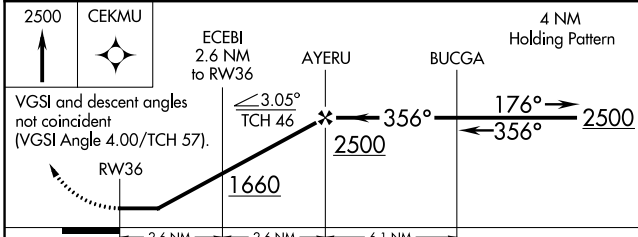
ELKHART MUNI (EKM)

RNP APCH.				MISSED APPROACH: Climb to 2500 direct CEKMU and hold.	
<p>▼ When local altimeter setting not received, use South Bend altimeter setting and increase all MDA 40 feet. Straight-in and Circling RWY 36 NA at night. Rwy 36 helicopter visibility reduction below 1 SM NA. Circling NA to Rwys 8 and 26.</p>					

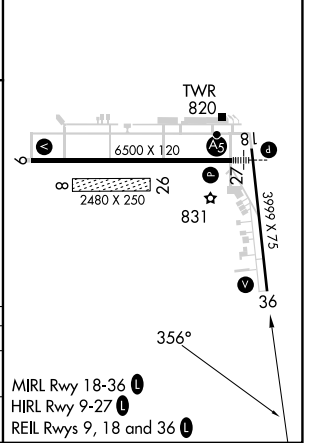
AWOS-3	SOUTH BEND APP CON *	ELKHART TOWER *	GND CON	CLNC DEL	CLNC DEL	UNICOM
124.475	118.55 257.8	119.5 (CTAF) 0	121.8	121.8	119.7 (When twr closed)	122.95



ELEV	778	D	TDZE	776
------	------------	----------	------	------------



ELEV	778	D	TDZE	776
------	------------	----------	------	------------



CATEGORY	A	B	C	D
LNVA MDA	1220-1	444 (500-1)	1220-1¼ 444 (500-1¼)	1220-1½ 444 (500-1½)
C CIRCLING	1240-1 462 (500-1)	1300-1 522 (600-1)	1380-1¾ 602 (700-1¾)	1580-2½ 802 (900-2½)

EC-2, 31 OCT 2024 to 28 NOV 2024

EC-2, 31 OCT 2024 to 28 NOV 2024