

WAAS CH <b>40316</b> <b>W22A</b>	APP CRS <b>225°</b>	Rwy Idg <b>3812</b> TDZE <b>821</b> Apt Elev <b>822</b>
--	------------------------	---

# RNAV (GPS) RWY 22

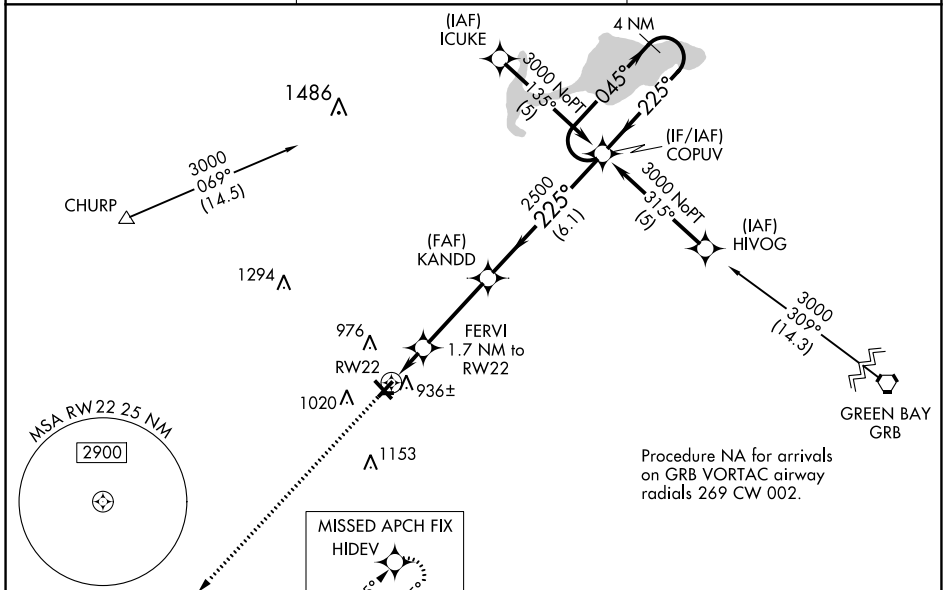
CLINTONVILLE MUNI (CLI)

RNP APCH.

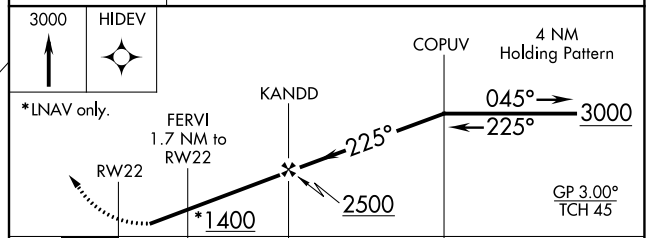
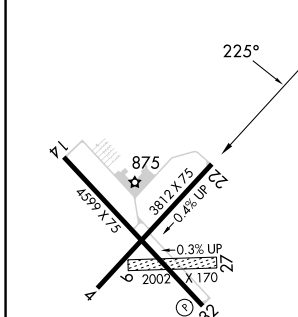
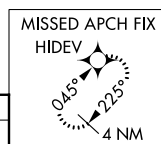
Baro-VNAV NA when using Green Bay altimeter setting. For uncompensated Baro-VNAV systems, LNAV/VNAV NA below -16°C or above 54°C. When local altimeter setting not received, use Green Bay altimeter setting and increase all DA/MDA 80 feet. Increase LPV visibility 3/8 SM all Cats and LNAV/VNAV visibility 1/4 SM all Cats. Circling NA to Rwy 9 and 27. Circling Rwy 14 NA at night. Rwy 22 helicopter visibility reduction below 3/4 SM NA.

MISSED APPROACH:  
Climb to 3000 direct  
HIDEV and hold.

AWOS-3 <b>120.675</b>	GREEN BAY APP CON ★ <b>126.3 338.2</b>	UNICOM <b>122.8 (CTAF) ①</b>
--------------------------	---	---------------------------------



ELEV 822	TDZE 821
----------	----------



CATEGORY	A	B	C	D
LPV DA	1183-1	362 (400-1)		NA
LNAV/VNAV DA	1236-1 1/8	415 (500-1 1/8)		NA
LNAV MDA	1220-1	399 (400-1)		NA
CIRCLING	1340-1	518 (600-1)		NA

REIL Rwy 32 ①  
MIRL Rwy 4-22 and 14-32 ①

EC-3, 31 OCT 2024 to 28 NOV 2024

EC-3, 31 OCT 2024 to 28 NOV 2024