

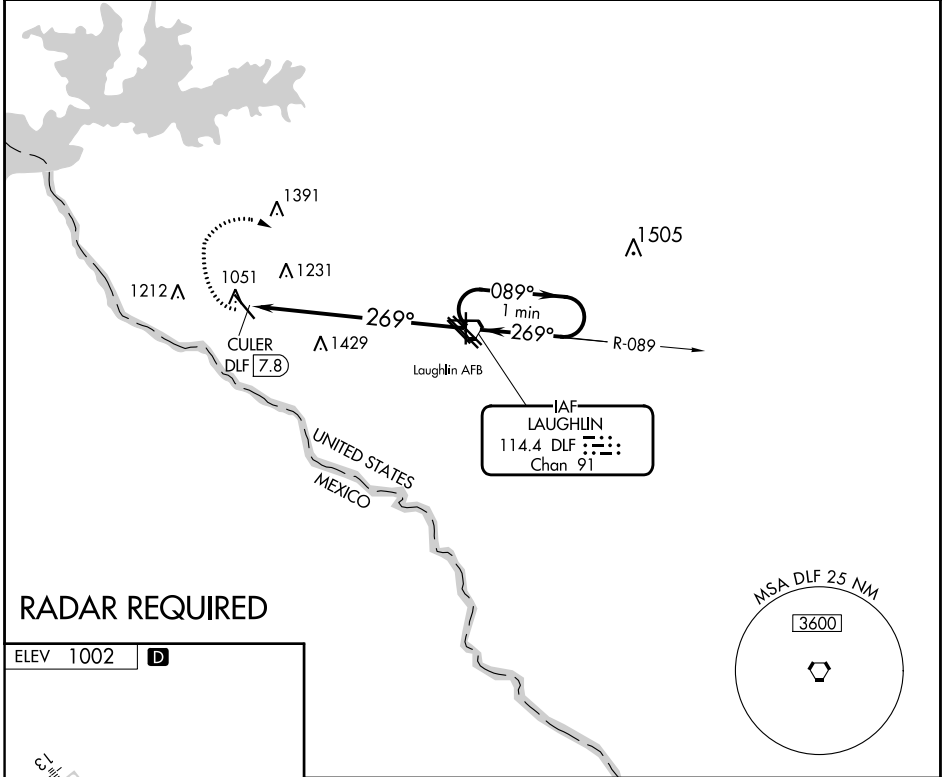
VORTAC DLF <b>114.4</b> Chan <b>91</b>	APP CRS <b>269°</b>	Rwy Idg TDZE Apt Elev <b>1002</b>	N/A N/A <b>1002</b>
--	------------------------	--	---------------------------

**VOR-A**  
DEL RIO INTL (DRT)

**⚠** Circling NA for Cat D SW of Rwy 13-31. If local altimeter setting not received, use Laughlin AFB altimeter setting and increase all MDAs 40 feet.

**⚠** MISSED APPROACH: Climbing right turn to 4000 via heading 340° then right turn direct DLF VORTAC and hold.

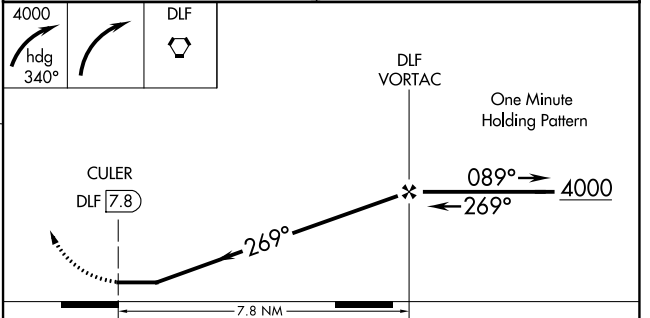
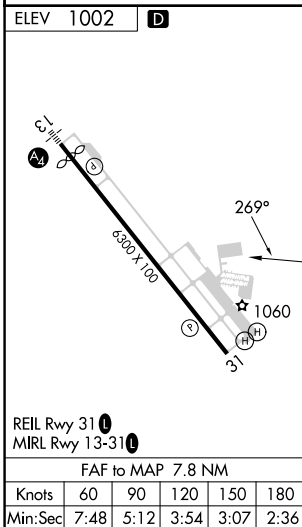
ASOS <b>118.525</b>	DEL RIO APP CON * <b>119.6 259.1</b>	CLNC DEL <b>120.5</b>	UNICOM <b>122.8 (CTAF) 0</b>
------------------------	---	--------------------------	---------------------------------



SC-3, 03 OCT 2024 to 31 OCT 2024

SC-3, 03 OCT 2024 to 31 OCT 2024

**RADAR REQUIRED**



FAF to MAP 7.8 NM		CATEGORY	A	B	C	D
Knots	60 90 120 150 180	<b>C</b> CIRCLING	1780-1 778 (800-1)	1780-1¼ 778 (800-1¼)	1780-2¼ 778 (800-2¼)	1780-2½ 778 (800-2½)
Min:Sec	7:48 5:12 3:54 3:07 2:36					