

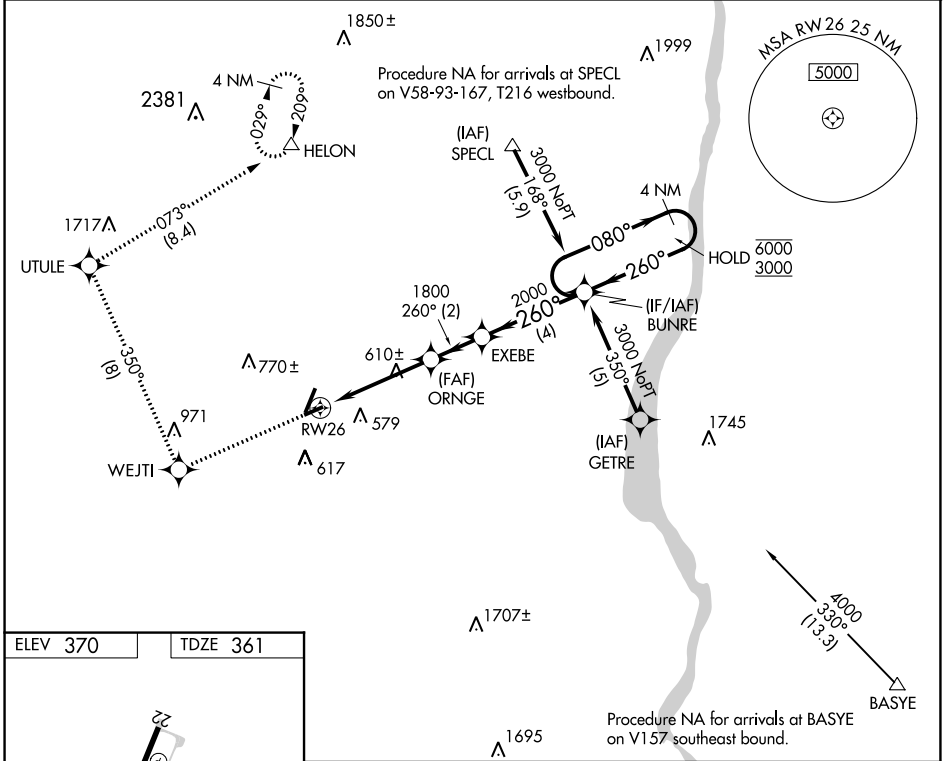
APP CRS 260°	Rwy Idg TDZE Apt Elev	3349 361 370
------------------------	-----------------------------	---

RNAV (GPS) RWY 26

ORANGE COUNTY (MGJ)

RNP APCH.	MISSED APPROACH: Climb to 4000 direct WEJTI and right turn on track 350° to UTULE and on track 073° to HELON and hold.
▼ Rwy 26 helicopter visibility reduction below 1 SM NA. ▲ Straight-in Rwy 26 NA at night, Circling Rwy 8, 22, 26 NA at night.	

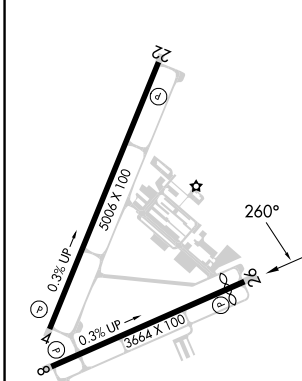
ASOS 119.275	NEW YORK APP CON 132.75 363.1	CLNC DEL 123.85	UNICOM 122.725 (CTAF) 0
------------------------	---	---------------------------	-----------------------------------



NE-2, 08 AUG 2024 to 05 SEP 2024

NE-2, 08 AUG 2024 to 05 SEP 2024

ELEV 370	TDZE 361
----------	----------



- REIL Rwy 4 and 22
- HIRL Rwy 4-22 0
- MIRL Rwy 8-26 0

4000	WEJTI	UTULE	HELON	Visual Segment- Obstacles.
↑	☀	☀ tr 350°	☀ tr 073°	BUNRE 4 NM Holding Pattern
VGSi and descent angles not coincident (VGSi Angle 3.50/TCH 43).				
4.3 NM	2 NM	4 NM		
CATEGORY	A	B	C	D
LNAV MDA	920-1	559 (600-1)	920-1½ 559 (600-1½)	920-1¾ 559 (600-1¾)
<input checked="" type="checkbox"/> CIRCLING	1200-1¼	830 (900-1¼)	1200-2½ 830 (900-2½)	1220-2¾ 850 (900-2¾)