

LOC I-CEW <b>111.9</b>	APP CRS <b>175°</b>	Rwy Idg <b>8006</b>
		TDZE <b>213</b>
		Apt Elev <b>214</b>

# ILS or LOC RWY 17

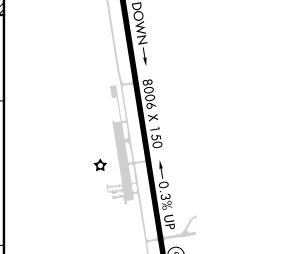
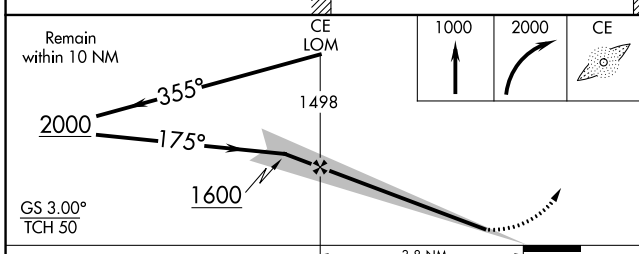
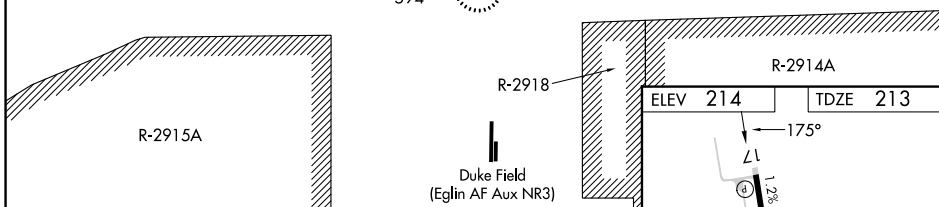
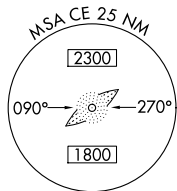
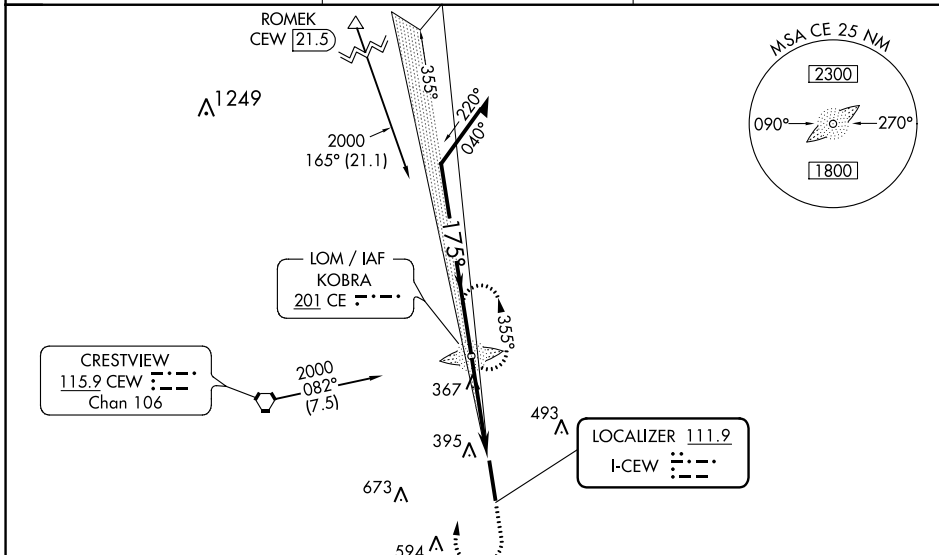
BOB SIKES (CEW)

ADF required.

**NA** Circling NA for Cat D West of Rwy 17-35. Autopilot coupled approach NA. When local altimeter setting not received, use Eglin AFB altimeter setting and increase S-ILS 17 DA to 472 and all MDA 60 feet, increase S-LOC 17 Cat C/D and Circling Cat D visibility ¼ SM.

**MISSED APPROACH:** Climb to 1000 then climbing right turn to 2000 direct KOBRA LOM and hold.

ASOS <b>119.275</b>	EGLIN APP CON <b>124.05 284.65</b>	UNICOM <b>122.95 (CTAF) 0</b>
------------------------	---------------------------------------	----------------------------------



CATEGORY	A	B	C	D
S-ILS 17	413-¾ 200 (200-¾)			
S-LOC 17	620-1	407 (500-1)	620-1½	407 (500-1½)
<b>C</b> CIRCLING	700-1	486 (500-1)	820-1¾	840-2
			606 (700-1¾)	626 (700-2)

FAF to MAP 3.8 NM					
Knots	60	90	120	150	180
Min:Sec	3:48	2:32	1:54	1:31	1:16

SE-3, 03 OCT 2024 to 31 OCT 2024

SE-3, 03 OCT 2024 to 31 OCT 2024