

NE-3, 26 JAN 2023 to 23 FEB 2023

**TOP ALTITUDE:**  
**3000**



**TAKEOFF MINIMUMS**

Rwy 14: Standard.  
Rwy 32: Standard with minimum climb  
of 240' per NM to 1900.

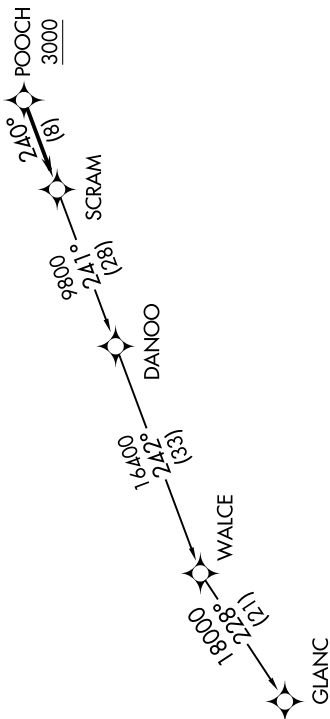
**NOTE: RNAV 1.**  
**NOTE: RADAR required.**  
**NOTE: DME/DME/IRU or GPS required.**  
**NOTE: Turbo-jets only.**  
**NOTE: Takeoff Rwy 32 requires a climb to 2500 on heading 34.1° before proceeding on the ATC assigned heading for obstacle avoidance.**

NOTE: Chart not to scale.

**DEPARTURE ROUTE DESCRIPTION**

Climb on heading assigned by ATC, expect RADAR vectors to POOCH, then on track 240° to SCRAM, thence. . . . .  
. . . . as depicted. Maintain 3000, expect clearance to filed altitude within ten (10) minutes after departure.

**GLANC TRANSITION (SCRAM6.GLANC):**



POTOMAC DEP CON  
120.45 306.925  
AWOS-3  
124.85  
CLNC DEL  
126.15  
UNICOM  
122.975 (CTAF)

NE-3, 26 JAN 2023 to 23 FEB 2023